



Technical data

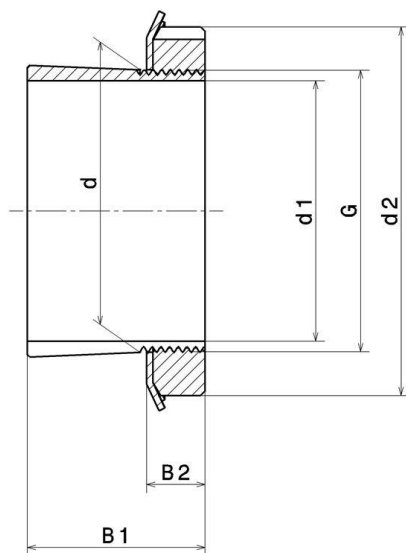
H2322

Adapter sleeve

KIT CONTENT

MB.22, KM.22

VISUAL (S)



PRODUCT DIMENSIONS

Sleeve bore diameter (d1)	100 mm
Internal diameter (d)	110 mm
Outer diameter of locknut (d2)	145 mm
Sleeve length (B1)	105 mm
Distance between the bearing face and nut rear face (B2)	21 mm
Thread designation (G)	M110X2
Associated bearing	22322, 23222, 23022, 2322

PRODUCT DIMENSIONS

Bore	Tapered 1:12
Mass	2,75 kg
Brand	SNR