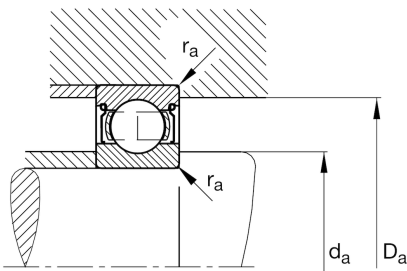
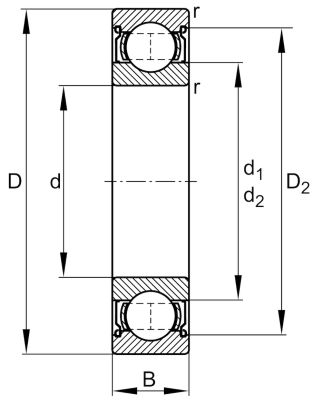


**FAG****607-2Z-HLN-C3**

Deep groove ball bearing

Schaeffler ID:  
0629066660030Deep groove ball bearing 60...-2Z, single  
row, shields, steel sheet metal cage

## Technical information

**Main Dimensions & Performance Data**

|          |              |                                   |
|----------|--------------|-----------------------------------|
| d        | 7 mm         | Bore diameter                     |
| D        | 19 mm        | Outside diameter                  |
| B        | 6 mm         | Width                             |
| $C_r$    | 2.610 N      | Basic dynamic load rating, radial |
| $C_{0r}$ | 1.050 N      | Basic static load rating, radial  |
| $C_{ur}$ | 65 N         | Fatigue load limit, radial        |
| $n_G$    | 44.500 1/min | Limiting speed                    |
| $n_{gr}$ | 34.500 1/min | Reference speed                   |
|          | 0,007 kg     | Weight                            |

**Mounting dimensions**

|              |        |                                      |
|--------------|--------|--------------------------------------|
| $d_{a \min}$ | 9 mm   | Minimum diameter shaft shoulder      |
| $D_{a \max}$ | 17 mm  | Maximum diameter of housing shoulder |
| $r_{a \max}$ | 0,3 mm | Maximum fillet radius                |

**Dimensions**

|            |         |                             |
|------------|---------|-----------------------------|
| $r_{\min}$ | 0,3 mm  | Minimum chamfer dimension   |
| $D_2$      | 16,5 mm | Caliber diameter outer ring |
| $d_2$      | 9 mm    | Caliber diameter inner ring |

**Temperature range**

|            |        |                            |
|------------|--------|----------------------------|
| $T_{\min}$ | -30 °C | Operating temperature min. |
| $T_{\max}$ | 120 °C | Operating temperature max. |

**Calculation factors**

|       |     |                    |
|-------|-----|--------------------|
| $f_0$ | 122 | Calculation factor |
|-------|-----|--------------------|