



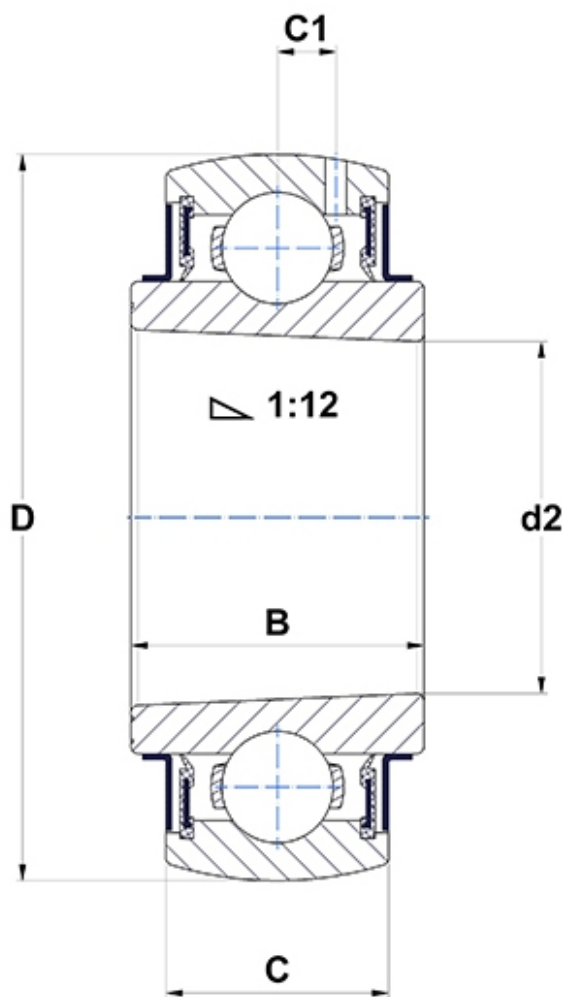
**Technical data**

**UK.218.G2**

Insert bearings

spherical outer diameter, tapered bore, seal with slinger

**Visual(s)**



**Product definition**

<b>B</b>	48 mm
<b>C</b>	37 mm
<b>C1</b>	12 mm
<b>d2</b>	90 mm
<b>D</b>	160 mm

## Product performance

<b>C</b>	96 kN
<b>C0</b>	71.5 kN
<b>T min.</b>	-20 °C
<b>T max.</b>	100 °C

## Other features

<b>Weight</b>	3 kg
---------------	------