



Technical data

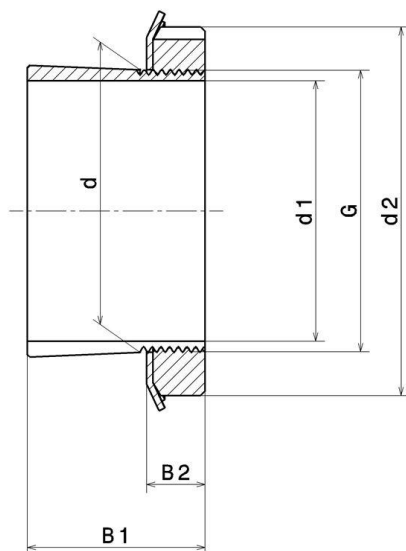
H2311

Adapter sleeve

KIT CONTENT

MB11, KM.11

VISUAL (S)



PRODUCT DIMENSIONS

Sleeve bore diameter (d1)	50 mm
Internal diameter (d)	55 mm
Outer diameter of locknut (d2)	75 mm
Sleeve length (B1)	59 mm
Distance between the bearing face and nut rear face (B2)	12 mm
Thread designation (G)	M55X2
Associated bearing	22311, 2311

PRODUCT DIMENSIONS

Bore	Tapered 1:12
Mass	0,42 kg
Brand	SNR