



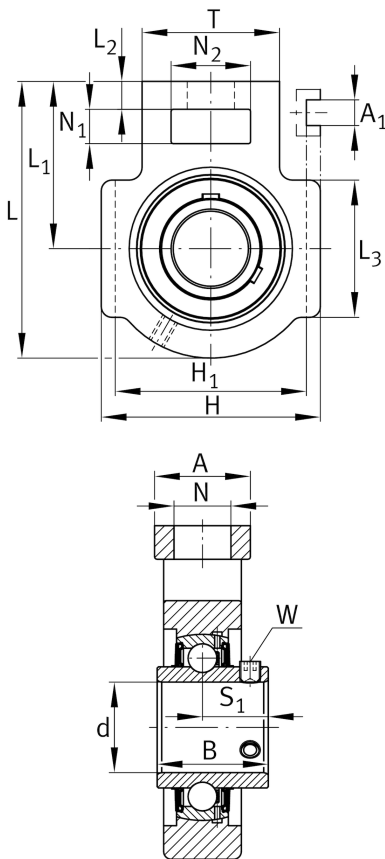
FAG

UCT207

Take-up housing unit

Schaeffler ID:
0822258770000Housing units UCT, cast iron housing,
radial insert ball bearing with grub screws
in inner ring, RSR seals, for linear motion

Technical information

**Dimensions**

L_1	78 mm	Distance shaft axis
L_2	13 mm	Length fixed link
L_3	64 mm	Length guidance groove
A	37 mm	Width housing fixing side
N_1	16 mm	Width recess
N_2	37 mm	Height recess
B	42,9 mm	Width inner ring
S_1	25,4 mm	Distance of raceway to locking collar
T	64 mm	Height housing fixing side
Q	M6	Connection thread lubrication
A_2	30 mm	Width housing
	1,608 kg	Weight

Main Dimensions & Performance Data

d	35 mm	Bore diameter
H	102 mm	Height
L	129 mm	Length total

Mounting dimensions

A_1	12 mm	Width guidance groove
	0,2 mm	Upper width guidance groove tolerance
	0 mm	Lower width guidance groove tolerance
H_1	89 mm	Distance guidance grooves
	0 mm	Upper distance guidance groove tolerance
	-0,5 mm	Lower distance guidance groove tolerance
N	22 mm	Fixing bore

Additional information

T207	Housing
UC207	Bearing designation