

PBS25-XL

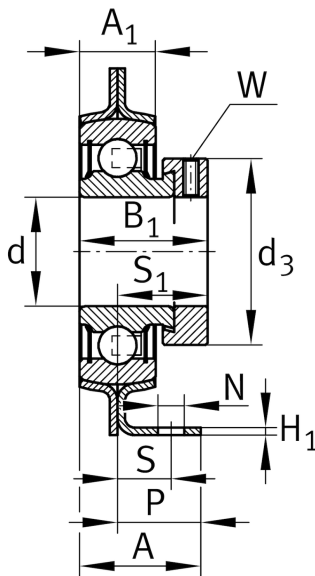
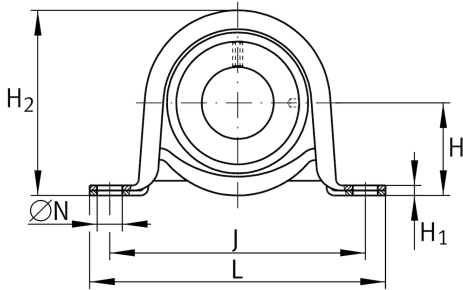
Plummer block housing unit

Schaeffler ID:
0008291100000

Plummer block housing units PBS, sheet steel housing, radial insert ball bearing with eccentric locking collar, P seals

X-life

Technical information



Dimensions

H	36,5 mm	Distance shaft axis
A	34,1 mm	Width (base)
A ₁	17,4 mm	Width (head)
H ₁	3,4 mm	Height (base)
P	25,4 mm	Distance support
	0,48 kg	Weight

Main Dimensions & Performance Data

d	25 mm	Bore diameter
H ₂	72 mm	Height
L	133,5 mm	Length total
C _{0rG}	3.600 N	Load carrying capacity (housing)

Mounting dimensions

J	95,5 mm	Distance fixing bore
N	10,5 mm	Width (slot)
N ₁	9,5 mm	Distance slot center
S	14,3 mm	Distance fixing

Additional information

GEH52-PBS	Housing
RAE25-XL-NPP-B	Bearing designation