

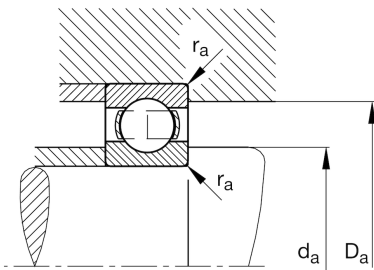
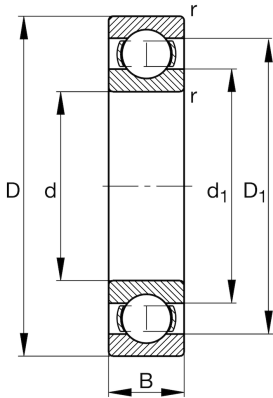
FAG

6303-H

Deep groove ball bearing

Schaeffler ID:
0938689280000Deep groove ball bearing 63.-H, single
row, H-Series, steel sheet metal cage

Technical information

**Temperature range**

T_{\min}	-30 °C	Operating temperature min.
T_{\max}	120 °C	Operating temperature max.
	0,113 kg	Weight

Main Dimensions & Performance Data

d	17 mm	Bore diameter
D	47 mm	Outside diameter
B	14 mm	Width
C_r	13.580 N	Basic dynamic load rating, radial
C_{0r}	6.580 N	Basic static load rating, radial
C_{ur}	390 N	Fatigue load limit, radial
n_G	22.000 1/min	Limiting speed
n_{gr}	15.500 1/min	Reference speed

Dimensions

r_{\min}	1 mm	Minimum chamfer dimension
D_1	38,2 mm	Shoulder diameter outer ring
d_1	26,8 mm	Shoulder diameter inner ring

Mounting dimensions

$d_{a\min}$	22,6 mm	Minimum diameter shaft shoulder
$D_{a\max}$	41,4 mm	Maximum diameter of housing shoulder
$r_{a\max}$	1 mm	Maximum fillet radius

Calculation factors

f_0	12,3	Calculation factor
-------	------	--------------------