

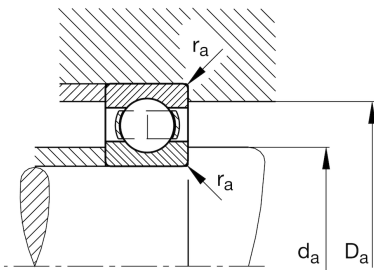
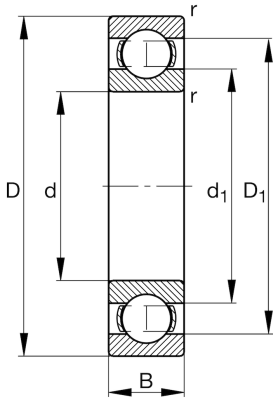
FAG

**6208-H**

Deep groove ball bearing

Schaeffler ID:  
0938566950000Deep groove ball bearing 62...-H, single  
row, H-Series, steel sheet metal cage

## Technical information

**Temperature range**

$T_{\min}$	-30 °C	Operating temperature min.
$T_{\max}$	120 °C	Operating temperature max.
	0,372 kg	Weight

**Main Dimensions & Performance Data**

d	40 mm	Bore diameter
D	80 mm	Outside diameter
B	18 mm	Width
$C_r$	29.520 N	Basic dynamic load rating, radial
$C_{0r}$	18.140 N	Basic static load rating, radial
$C_{ur}$	1.060 N	Fatigue load limit, radial
$n_G$	12.200 1/min	Limiting speed
$n_{gr}$	9.300 1/min	Reference speed

**Dimensions**

$r_{\min}$	1,1 mm	Minimum chamfer dimension
$D_1$	67,2 mm	Shoulder diameter outer ring
$d_1$	52,8 mm	Shoulder diameter inner ring

**Mounting dimensions**

$d_{a \min}$	47 mm	Minimum diameter shaft shoulder
$D_{a \max}$	73 mm	Maximum diameter of housing shoulder
$r_{a \max}$	1,1 mm	Maximum fillet radius

**Calculation factors**

$f_0$	14	Calculation factor
-------	----	--------------------