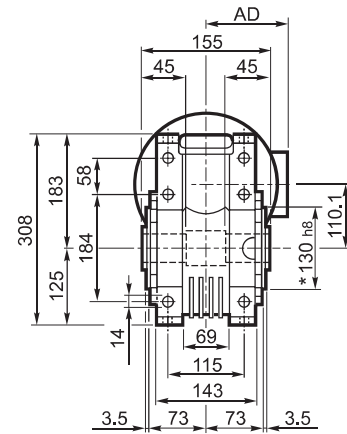
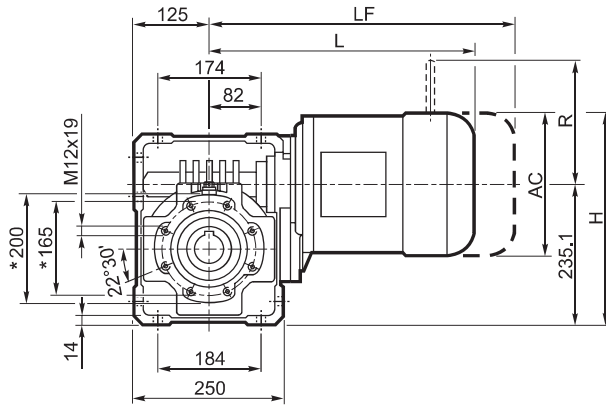
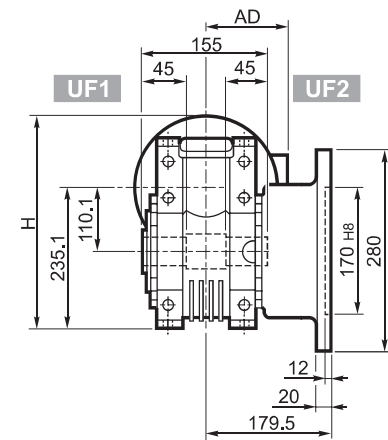
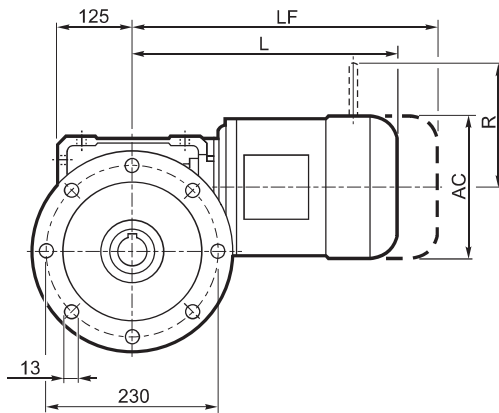


W 110...M/ME/MX

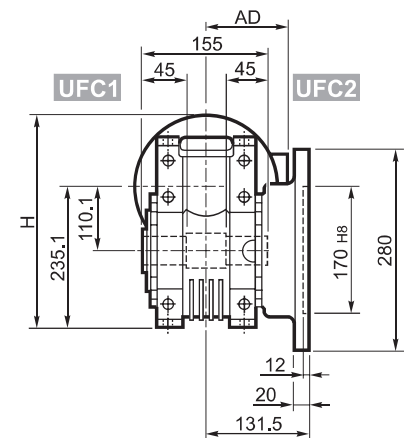
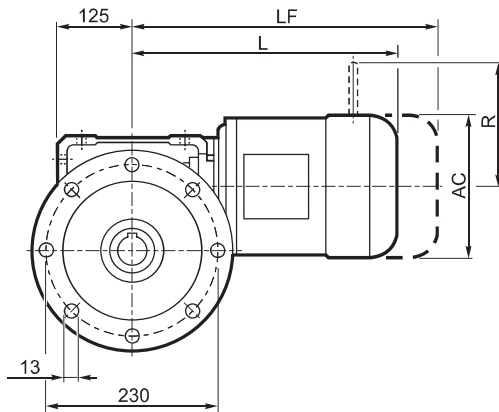
U



UF_

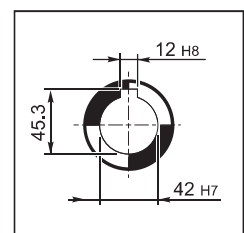


UFC_

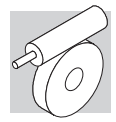


			M/ME/MX				Kg	M...FD M...FA		M...FD		M...FA				
			AC	H	L	AD		LF	Kg	R	AD	R	AD			
			W 110	S2	M2S	156	313	364	119	38	440	41	129	146	134	119
W 110	S2	ME2S	156	313	364	119	38	—	—	—	—	—	—	—	—	
W 110	S2	MX2S	156	313	408	119	43.1	—	—	—	—	—	—	—	—	
W 110	S3	ME3S	195	332	407	142	47.5	—	—	—	—	—	—	—	—	
W 110	S3	MX3S	195	332	440	142	50.5	—	—	—	—	—	—	—	—	
W 110	S3	ME3L	195	332	439	142	53	—	—	—	—	—	—	—	—	
W 110	S3	MX3L	195	332	483	142	59	—	—	—	—	—	—	—	—	

OUTPUT

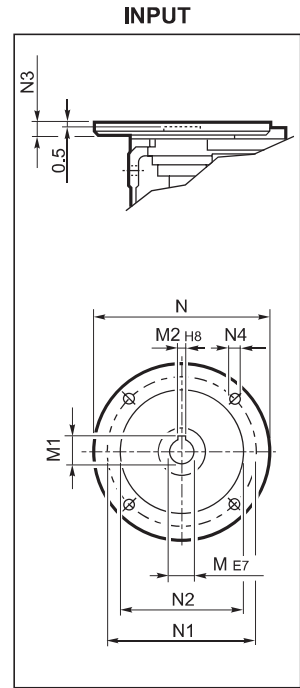
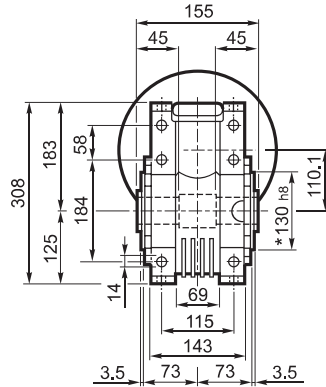
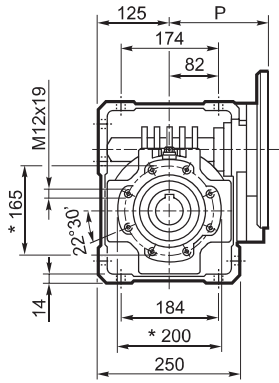


* On both sides

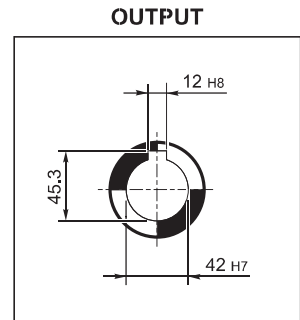
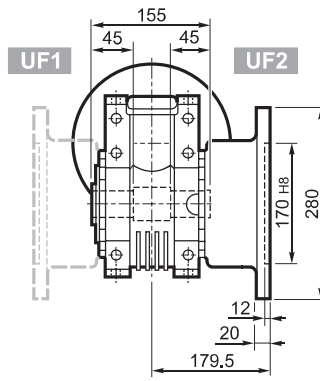
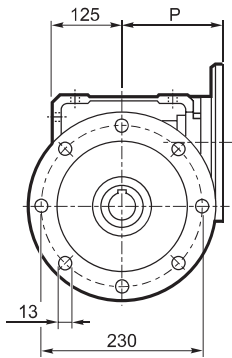


W 110...P (IEC)

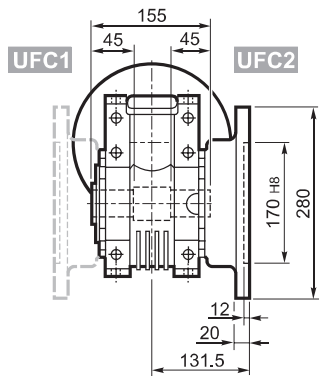
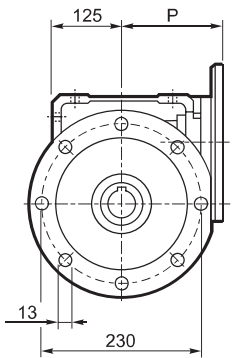
U



UF_



UFC_



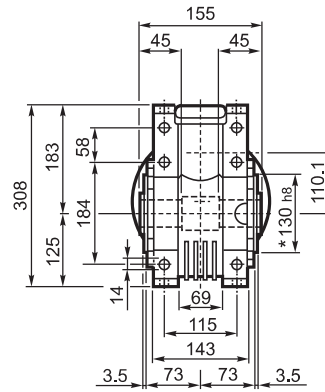
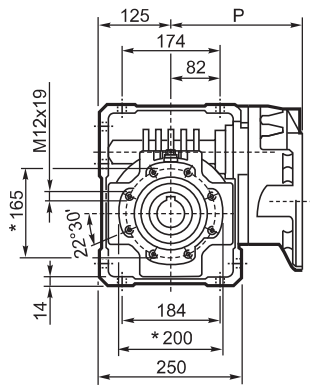
		M	M1	M2	N	N1	N2	N3	N4	P	
W 110	P80 B5	19	21.8	6	200	165	130	—	M10x12	143	28
W 110	P90 B5	24	27.3	8	200	165	130	—	M10x12	143	28
W 110	P100 B5	28	31.3	8	250	215	180	13	13	151	29
W 110	P112 B5	28	31.3	8	250	215	180	13	13	151	29
W 110	P132 B5	38	41.3	10	300	265	230	16	14	226	31
W 110	P80 B14	19	21.8	6	120	100	80	7.5	7	143	27.5
W 110	P90 B14	24	27.3	8	140	115	95	6.5	9	143	27.5
W 110	P100 B14	28	31.3	8	160	130	110	13	9	151	27
W 110	P112 B14	28	31.3	8	160	130	110	13	9	151	27

* On both sides

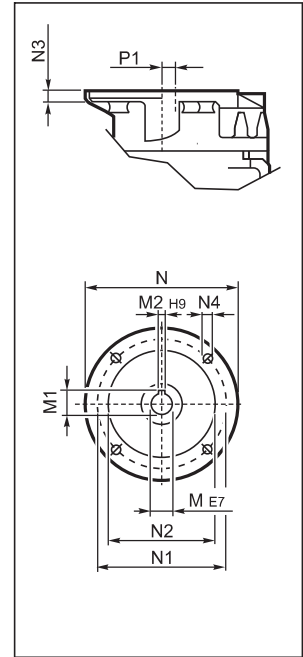


WR 110...P (IEC)

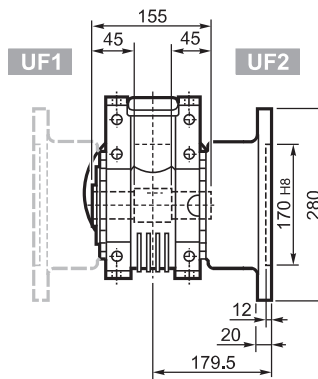
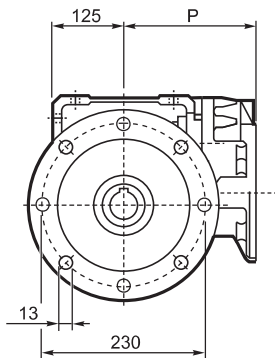
U



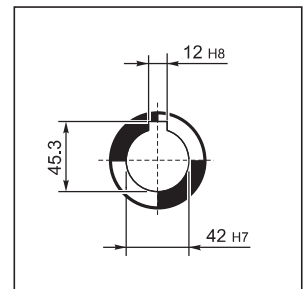
INPUT



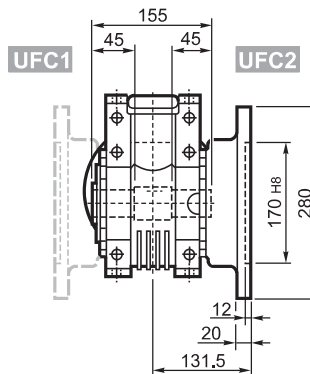
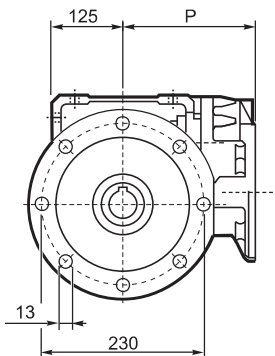
UF_



OUTPUT



UFC_



		M	M1	M2	N	N1	N2	N3	N4	P	P1	Kg
		14	16.3	5	160	130	110	10	M8x14	185	58.6	30.5
		19	21.8	6	200	165	130	14	M10x15	204	21.1	31
		24	27.3	8	200	165	130	14	M10x15	204	21.1	31
		28	31.3	8	250	215	180	14	M12x13	213	21.1	32
		28	31.3	8	250	215	180	14	M12x13	213	21.1	32

* On both sides