



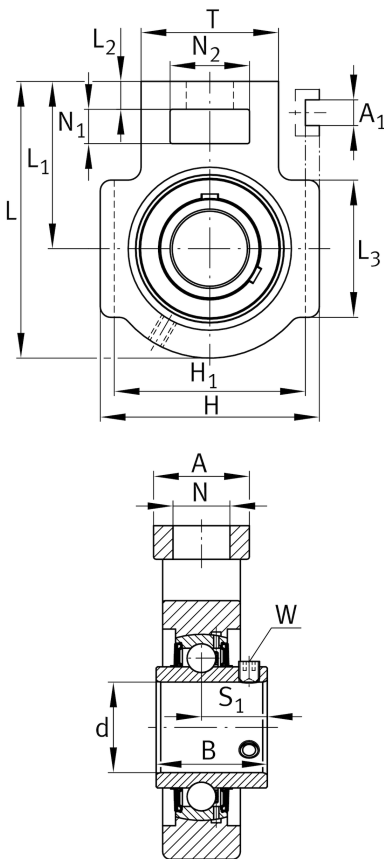
FAG

UCT210

Take-up housing unit

Schaeffler ID:
0822448980000Housing units UCT, cast iron housing,
radial insert ball bearing with grub screws
in inner ring, RSR seals, for linear motion

Technical information

**Dimensions**

L_1	90 mm	Distance shaft axis
L_2	16 mm	Length fixed link
L_3	86 mm	Length guidance groove
A	49 mm	Width housing fixing side
N_1	19 mm	Width recess
N_2	49 mm	Height recess
B	51,6 mm	Width inner ring
S_1	32,6 mm	Distance of raceway to locking collar
T	83 mm	Height housing fixing side
Q	M6	Connection thread lubrication
A_2	37 mm	Width housing
	2,6 kg	Weight

Main Dimensions & Performance Data

d	50 mm	Bore diameter
H	117 mm	Height
L	149 mm	Length total

Mounting dimensions

A_1	16 mm	Width guidance groove
	0,2 mm	Upper width guidance groove tolerance
	0 mm	Lower width guidance groove tolerance
H_1	102 mm	Distance guidance grooves
	0 mm	Upper distance guidance groove tolerance
	-0,5 mm	Lower distance guidance groove tolerance
N	29 mm	Fixing bore

Additional information

T210	Housing
UC210	Bearing designation