



FAG

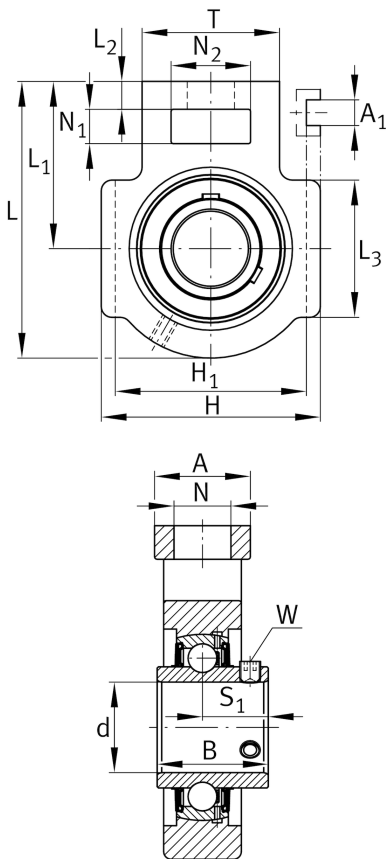
UCT209

Take-up housing unit

Schaeffler ID:
0822389280000

Housing units UCT, cast iron housing,
radial insert ball bearing with grub screws
in inner ring, RSR seals, for linear motion

Technical information



Dimensions		
L ₁	87 mm	Distance shaft axis
L ₂	16 mm	Length fixed link
L ₃	83 mm	Length guidance groove
A	49 mm	Width housing fixing side
N ₁	19 mm	Width recess
N ₂	49 mm	Height recess
B	49,2 mm	Width inner ring
S ₁	30,2 mm	Distance of raceway to locking collar
T	83 mm	Height housing fixing side
Q	M6	Connection thread lubrication
A ₂	35 mm	Width housing
	2,404 kg	Weight

Main Dimensions & Performance Data		
d	45 mm	Bore diameter
H	117 mm	Height
L	144 mm	Length total

Mounting dimensions		
A ₁	16 mm	Width guidance groove
	0,2 mm	Upper width guidance groove tolerance
	0 mm	Lower width guidance groove tolerance
H ₁	102 mm	Distance guidance grooves
	0 mm	Upper distance guidance groove tolerance
	-0,5 mm	Lower distance guidance groove tolerance
N	29 mm	Fixing bore

Additional information	
T209	Housing
UC209	Bearing designation