



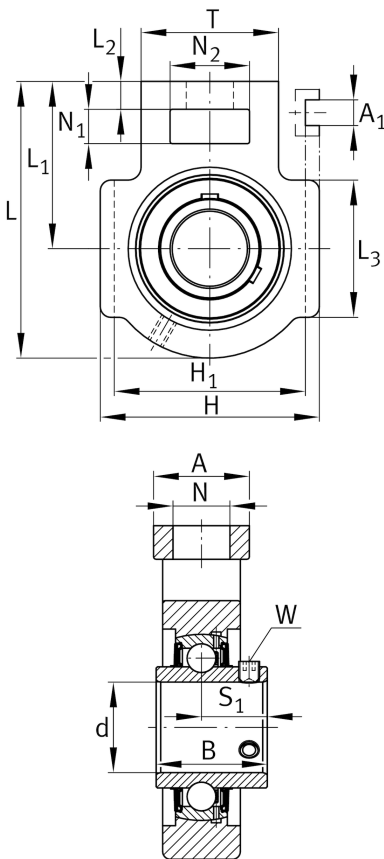
FAG

**UCT205**

Take-up housing unit

Schaeffler ID:  
0821733540000Housing units UCT, cast iron housing,  
radial insert ball bearing with grub screws  
in inner ring, RSR seals, for linear motion

## Technical information

**Dimensions**

L <sub>1</sub>	62 mm	Distance shaft axis
L <sub>2</sub>	10 mm	Length fixed link
L <sub>3</sub>	51 mm	Length guidance groove
A	32 mm	Width housing fixing side
N <sub>1</sub>	16 mm	Width recess
N <sub>2</sub>	32 mm	Height recess
B	34,1 mm	Width inner ring
S <sub>1</sub>	19,8 mm	Distance of raceway to locking collar
T	51 mm	Height housing fixing side
Q	M6	Connection thread lubrication
A <sub>2</sub>	24 mm	Width housing
	0,846 kg	Weight

**Main Dimensions & Performance Data**

d	25 mm	Bore diameter
H	89 mm	Height
L	97 mm	Length total

**Mounting dimensions**

A <sub>1</sub>	12 mm	Width guidance groove
	0,2 mm	Upper width guidance groove tolerance
	0 mm	Lower width guidance groove tolerance
H <sub>1</sub>	76 mm	Distance guidance grooves
	0 mm	Upper distance guidance groove tolerance
	-0,5 mm	Lower distance guidance groove tolerance
N	19 mm	Fixing bore

**Additional information**

T205	Housing
UC205	Bearing designation