

FAG

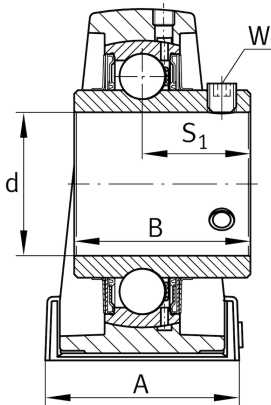
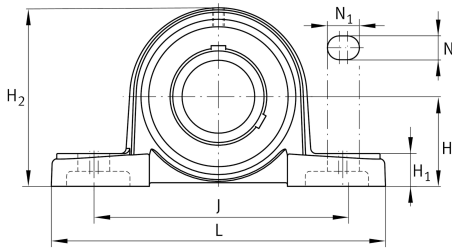
UCP212

Plummer block housing unit

Schaeffler ID:
0808223630000

Plummer block housing units UCP, cast iron housing, with long base, radial insert ball bearing with grub screws in inner ring, RSR seals

Technical information

**Dimensions**

H	69,8 mm	Distance shaft axis
A	70 mm	Width (base)
H ₁	25 mm	Height (base)
B	65,1 mm	Width
S ₁	39,7 mm	Distance of raceway to locking collar
Q	M6	Connection thread lubrication
	4,719 kg	Weight

Main Dimensions & Performance Data

d	60 mm	Bore diameter
L	241 mm	Length total
H ₂	138 mm	Height

Mounting dimensions

J	184 mm	Distance fixing bore
N	20 mm	Width (slot)
N ₁	25 mm	Length (slot)

Additional information

P212	Housing
UC212	Bearing designation