

FAG

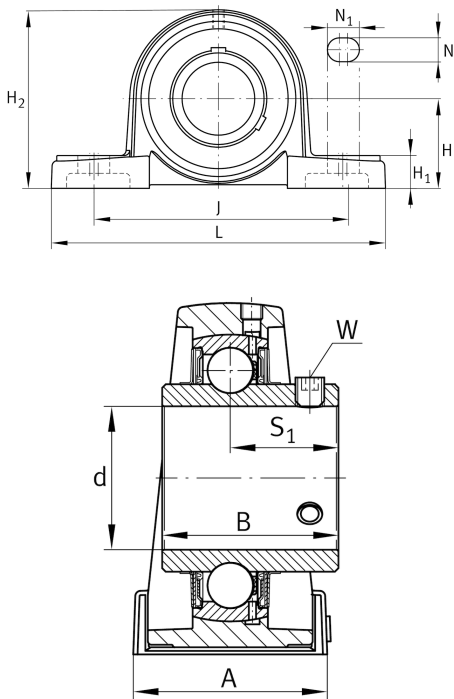
UCP211

Plummer block housing unit

Schaeffler ID:  
0811467280000

Plummer block housing units UCP, cast iron housing, with long base, radial insert ball bearing with grub screws in inner ring, RSR seals

Technical information



Dimensions

H	63,5 mm	Distance shaft axis
A	60 mm	Width (base)
H <sub>1</sub>	23 mm	Heigth (base)
B	55,6 mm	Width
S <sub>1</sub>	33,4 mm	Distance of raceway to locking collar
Q	M6	Connection thread lubrication
	3,592 kg	Weight

Main Dimensions & Performance Data

d	55 mm	Bore diameter
L	219 mm	Length total
H <sub>2</sub>	126 mm	Height

Mounting dimensions

J	171 mm	Distance fixing bore
N	20 mm	Width (slot)
N <sub>1</sub>	25 mm	Length (slot)

Additional information

P211	Housing
UC211	Bearing designation