

FAG

★ UCP206

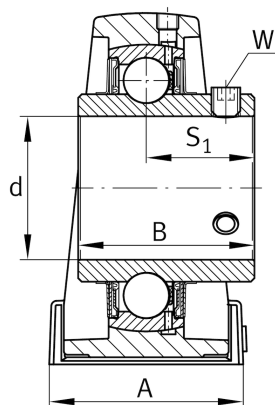
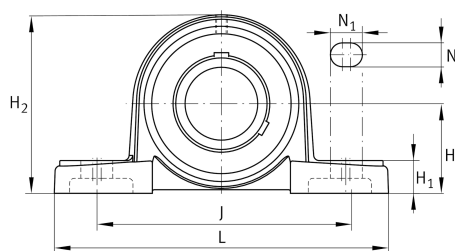
Plummer block housing unit

Schaeffler ID:
0800667550000

★ Preferred product

Plummer block housing units UCP, cast iron housing, with long base, radial insert ball bearing with grub screws in inner ring, RSR seals

Technical information



Main Dimensions & Performance Data

d	30 mm	Bore diameter
L	165 mm	Length total
H ₂	83 mm	Height
	1,349 kg	Weight

Dimensions

H	42,9 mm	Distance shaft axis
	P206	Housing
	UC206	Bearing designation
A	48 mm	Width (base)
H ₁	17 mm	Height (base)
B	38,1 mm	Width
S ₁	22,2 mm	Distance of raceway to locking collar
Q	M6	Connection thread lubrication

Mounting dimensions

J	121 mm	Distance fixing bore
N	17 mm	Width (slot)
N ₁	21 mm	Length (slot)