



FAG

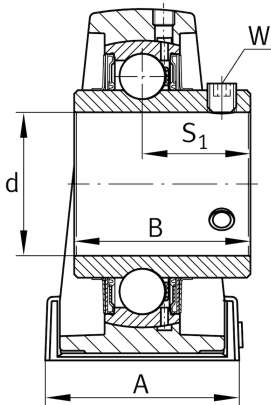
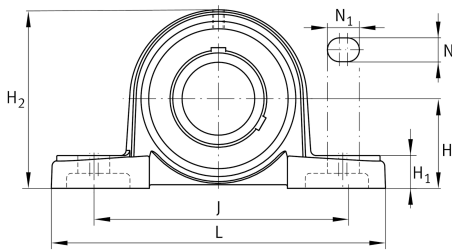
UCP205

Plummer block housing unit

Schaeffler ID:
0808214640000

Plummer block housing units UCP, cast iron housing, with long base, radial insert ball bearing with grub screws in inner ring, RSR seals

Technical information

**Dimensions**

| | | |
|----------------|----------|---------------------------------------|
| H | 36,5 mm | Distance shaft axis |
| A | 38 mm | Width (base) |
| H ₁ | 15 mm | Height (base) |
| B | 34,1 mm | Width |
| S ₁ | 19,8 mm | Distance of raceway to locking collar |
| Q | M6 | Connection thread lubrication |
| | 0,856 kg | Weight |

Main Dimensions & Performance Data

| | | |
|----------------|--------|---------------|
| d | 25 mm | Bore diameter |
| L | 140 mm | Length total |
| H ₂ | 71 mm | Height |

Mounting dimensions

| | | |
|----------------|--------|----------------------|
| J | 105 mm | Distance fixing bore |
| N | 13 mm | Width (slot) |
| N ₁ | 19 mm | Length (slot) |

Additional information

| | |
|-------|---------------------|
| P205 | Housing |
| UC205 | Bearing designation |