

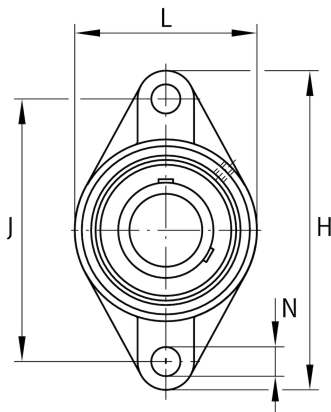
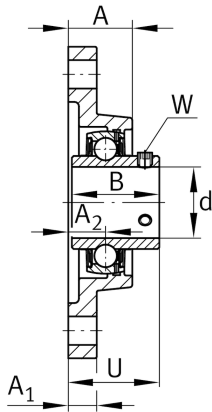
**FAG****UCFL205**

Flanged housing unit

Schaeffler ID:
0808213160000

Flanged housing unit UCFL

Technical information

**Dimensions**

A	27 mm	Height housing
A ₁	15 mm	Thickness of flange
A ₂	16 mm	Distance raceway
B	34,1 mm	Width
Q	M6	Connection thread lubrication
	0,673 kg	Weight

Main Dimensions & Performance Data

d	25 mm	Bore diameter
L	68 mm	Flange width
H	130 mm	Height flange
U	35,8 mm	Total height unit
C _r	14.000 N	Basic dynamic load rating, radial
C _{0r}	7.800 N	Basic static load rating, radial
C _{ur}	335 N	Fatigue load limit, radial

Mounting dimensions

J	99 mm	Distance fixing bore
J	90 mm	Pitch circle diameter (holes)
N	16 mm	Fixing bore
N ₁	63,6 mm	Distance fixing bore
n	2	Number of screwing holes

Additional information

	1	Number of housings
	FL205	Housing
	UC205	Bearing designation