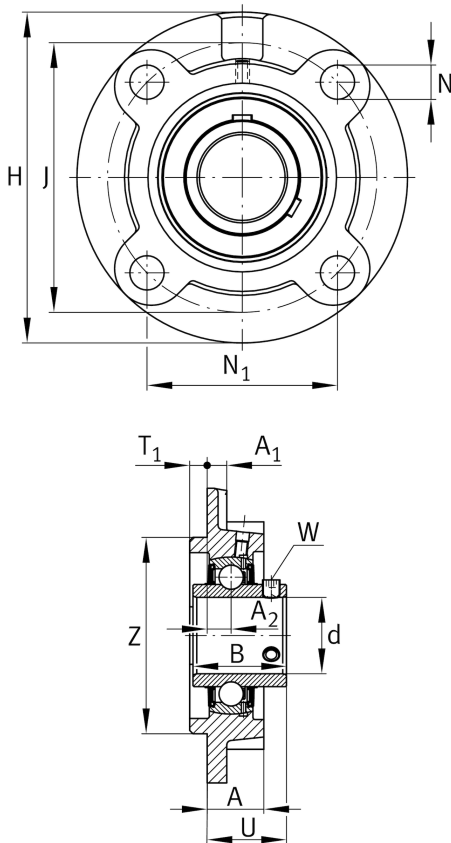
**FAG****UCFC206**

Flanged housing unit

Schaeffler ID:  
0821988370000

Flanged housing unit UCFC

## Technical information

**Dimensions**

A	23 mm	Height housing
A <sub>1</sub>	8 mm	Thickness of flange
A <sub>2</sub>	10 mm	Distance raceway
B	38,1 mm	Width
Q	M6	Connection thread lubrication
	1,253 kg	Weight

**Main Dimensions & Performance Data**

d	30 mm	Bore diameter
H	125 mm	Height flange
U	32,2 mm	Total height unit
C <sub>r</sub>	19.500 N	Basic dynamic load rating, radial
C <sub>0r</sub>	11.300 N	Basic static load rating, radial
C <sub>ur</sub>	480 N	Fatigue load limit, radial

**Mounting dimensions**

J	100 mm	Distance fixing bore
J	100 mm	Pitch circle diameter (holes)
N	12 mm	Fixing bore
N <sub>1</sub>	70,7 mm	Distance fixing bore
T <sub>1</sub>	8 mm	Height spigot
Z	80 mm	Diameter spigot
	h8	Diameter spigot clearance
n	4	Number of screwing holes

**Additional information**

	1	Number of housings
	FC206	Housing
	UC206	Bearing designation