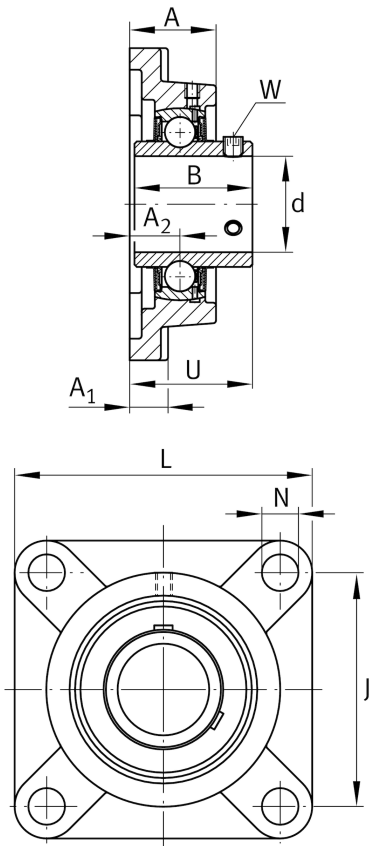




Technical information



Dimensions		
A	48 mm	Height housing
A ₁	20 mm	Thickness of flange
A ₂	29 mm	Distance raceway
B	68,7 mm	Width
Q	M6	Connection thread lubrication
	4,394 kg	Weight

Main Dimensions & Performance Data		
d	60 mm	Bore diameter
L	175 mm	Flange width
U	68,7 mm	Total height unit
C _r	52.000 N	Basic dynamic load rating, radial
C _{0r}	36.000 N	Basic static load rating, radial
C _{ur}	1.530 N	Fatigue load limit, radial

Mounting dimensions		
J	143 mm	Distance fixing bore
N	19 mm	Fixing bore
N ₁	143 mm	Distance fixing bore
n	4	Number of screwing holes

Additional information		
	1	Number of housings
	F212	Housing
	UC212	Bearing designation