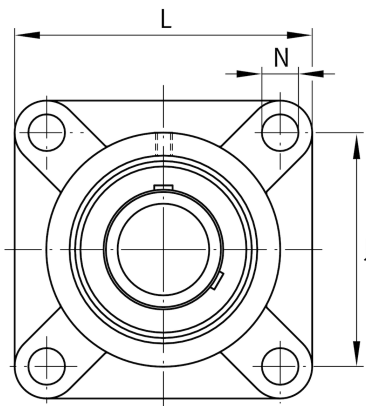
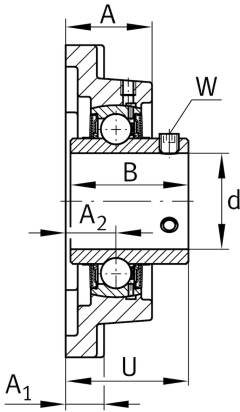
**FAG****UCF205**

Flanged housing unit

Schaeffler ID:
0806730400000

Flanged housing unit UCF

Technical information

**Dimensions**

A	27 mm	Height housing
A ₁	14 mm	Thickness of flange
A ₂	16 mm	Distance raceway
B	34,1 mm	Width
Q	M6	Connection thread lubrication
	0,876 kg	Weight

Main Dimensions & Performance Data

d	25 mm	Bore diameter
L	95 mm	Flange width
U	35,8 mm	Total height unit
C _r	14.000 N	Basic dynamic load rating, radial
C _{0r}	7.800 N	Basic static load rating, radial
C _{ur}	335 N	Fatigue load limit, radial

Mounting dimensions

J	70 mm	Distance fixing bore
N	12 mm	Fixing bore
N ₁	70 mm	Distance fixing bore
n	4	Number of screwing holes

Additional information

1	Number of housings
F205	Housing
UC205	Bearing designation