

RASEY40-XL-N

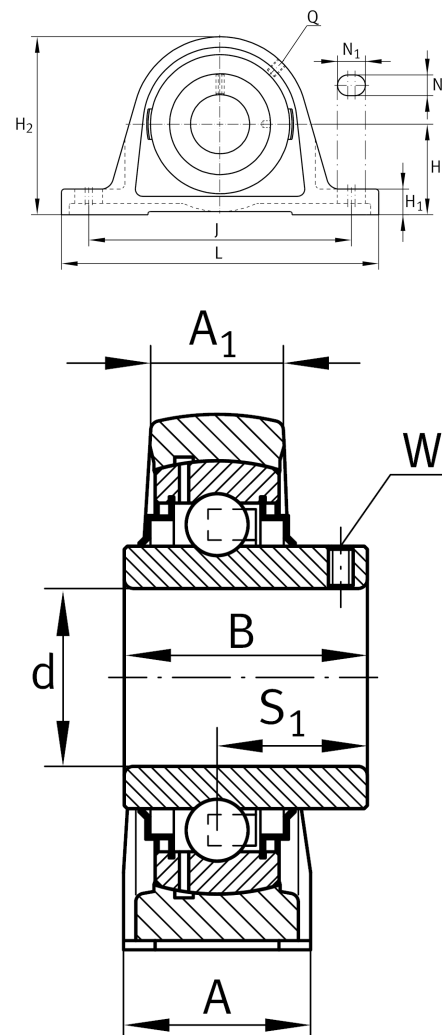
Plummer block housing unit

Schaeffler ID:  
0944931970000

Plummer block housing units RASEY, cast iron housing, radial insert ball bearing with grub screws in inner ring, R seals

X-life

Technical information



Dimensions

H	49,2 mm	Distance shaft axis
A	48 mm	Width (base)
A <sub>1</sub>	30 mm	Width (head)
H <sub>1</sub>	19 mm	Heigth (base)
B	49,2 mm	Width
S <sub>1</sub>	30,2 mm	Distance of raceway to locking collar
Q	M6	Connection thread lubrication
	1,84 kg	Weight

Main Dimensions & Performance Data

d	40 mm	Bore diameter
L	179 mm	Length total
H <sub>2</sub>	99 mm	Hight

Mounting dimensions

J	138,25 mm	Distance fixing bore
N	14 mm	Width (slot)
N <sub>1</sub>	26 mm	Length (slot)

Additional information

ASE08	Housing
GYE40-XL-KRR-B	Bearing designation
KASK08	Protecting cap