



RASEY35-XL-N

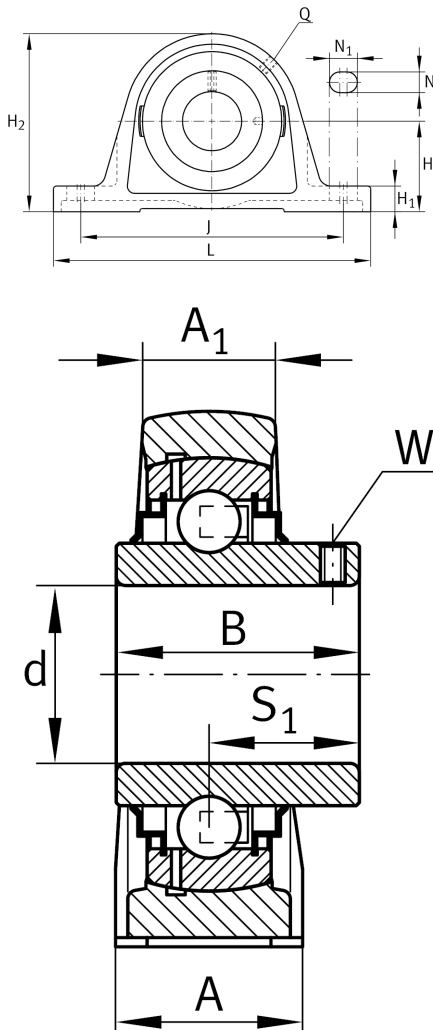
Plummer block housing unit

Schaeffler ID:
0945217940000

Plummer block housing units RASEY, cast iron housing, radial insert ball bearing with grub screws in inner ring, R seals

X-life

Technical information



Dimensions

H	47,6 mm	Distance shaft axis
A	45 mm	Width (base)
A ₁	27 mm	Width (head)
H ₁	19 mm	Height (base)
B	42,9 mm	Width
S ₁	25,4 mm	Distance of raceway to locking collar
Q	M6	Connection thread lubrication
	1,55 kg	Weight

Main Dimensions & Performance Data

d	35 mm	Bore diameter
L	163 mm	Length total
H ₂	93 mm	Height

Mounting dimensions

J	126 mm	Distance fixing bore
N	14 mm	Width (slot)
N ₁	21 mm	Length (slot)

Additional information

ASE07	Housing
GYE35-XL-KRR-B	Bearing designation
KASK07	Protecting cap