

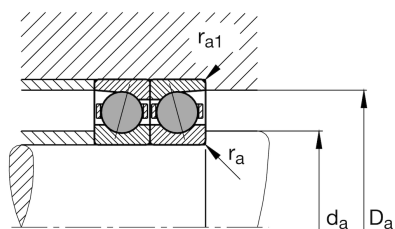
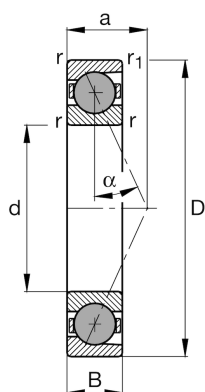
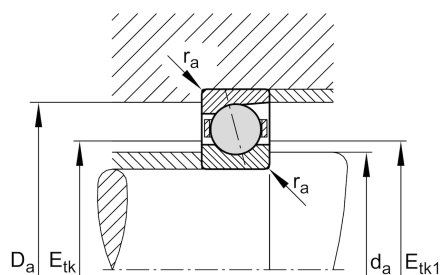
FAG

## HCB7011-E-T-P4S-UL

Spindle bearing

Schaeffler ID:  
0385651610000Spindle bearings HCB70..-E, adjusted, in pairs or sets, contact angle  $\alpha = 25^\circ$ , with ceramic balls, restricted tolerances

## Technical information



## Main Dimensions &amp; Performance Data

d	55 mm	Bore diameter
D	90 mm	Outside diameter
B	18 mm	Width
$C_r$	37.000 N	Basic dynamic load rating, radial
$C_{0r}$	20.100 N	Basic static load rating, radial
$C_{ur}$	1.620 N	Fatigue load limit, radial
$n_{G \text{ Grease}}$	20.000 1/min	Limiting speed for grease lubrication
$n_{G \text{ Oil}}$	30.000 1/min	Limiting speed for oil lubrication
	0,312 kg	Weight

## Dimensions

$r_{\min}$	1,1 mm	Minimum chamfer dimension
$r_{1 \min}$	1,1 mm	Minimum chamfer dimension
$\alpha$	$25^\circ$	Contact angle

## Mounting dimensions

$d_a$	62 mm	Diameter shaft shoulder
$d_a$	h12	Diameter shaft shoulder clearance
$D_a$	83 mm	Shoulder diameter outer ring
$D_a$	H12	Shoulder diameter outer ring clearance
$r_{a \max}$	1 mm	Maximum recess radius
$r_{a1 \max}$	0,6 mm	Maximum recess radius
$E_{tk \min}$	65,9 mm	Minimum diameter injection pitch
$E_{tk \max}$	69,6 mm	Maximum diameter injection pitch
$E_{tk1 \min}$	65,9 mm	Minimum diameter injection pitch
$E_{tk1 \max}$	69,6 mm	Maximum diameter injection pitch
a	25,9 mm	Distance between the apexes of the pressure cones

**Additional information**

$F_{VL}$	136 N	Preload force light
$F_{VM}$	562 N	Preload force medium
$F_{VH}$	1.236 N	Preload force heavy
$K_{aEL}$	390 N	Lift-off force light
$K_{aEM}$	1.653 N	Lift-off force medium
$K_{aEH}$	3.728 N	Lift-off force heavy
$c_{aL}$	121 N/ $\mu\text{m}$	Axial rigidity light
$c_{aM}$	203 N/ $\mu\text{m}$	Axial rigidity medium
$c_{aH}$	275 N/ $\mu\text{m}$	Axial rigidity heavy