



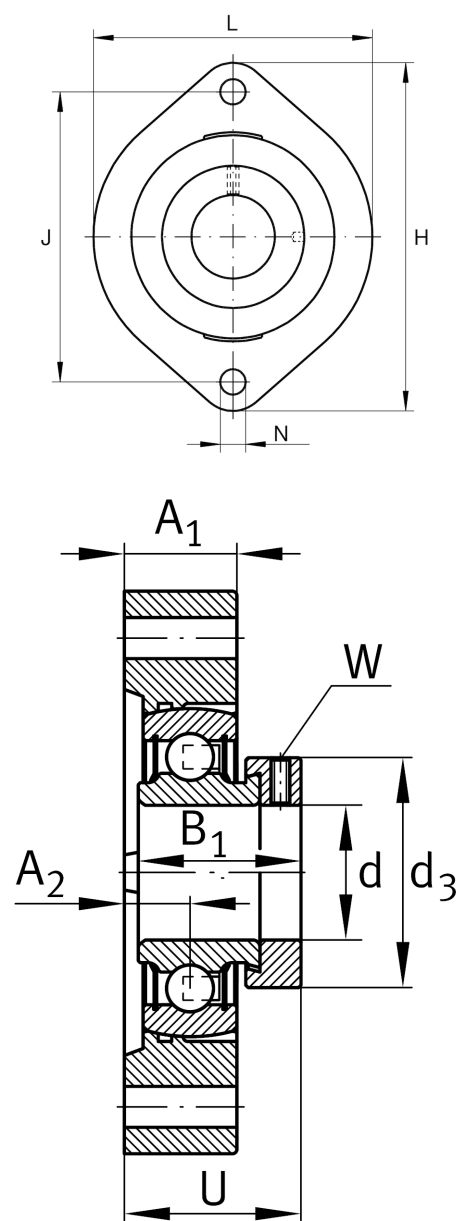
FLCTE25-XL

Flanged housing unit

Schaeffler ID:  
0008315650000

Housing units FLCTE, two-bolt flanged housing units, cast iron, eccentric locking collar, P seals, without relubrication facility

Technical information



Dimensions		
A <sub>1</sub>	19,5 mm	Thickness of flange
A <sub>2</sub>	9,9 mm	Distance raceway
d <sub>3</sub>	37,5 mm	Outside diameter eccentric locking collar
	0,47 kg	Weight

Main Dimensions & Performance Data		
d	25 mm	Bore diameter
L	71 mm	Flange width
H	97 mm	Height flange
U	33,4 mm	Total height unit
C <sub>r</sub>	14.000 N	Basic dynamic load rating, radial
C <sub>0r</sub>	7.800 N	Basic static load rating, radial
C <sub>ur</sub>	410 N	Fatigue load limit, radial

Mounting dimensions		
J	76,2 mm	Distance fixing bore
N	9 mm	Fixing bore
n	2	Number of screwing holes

Additional information		
	1	Number of housings
	LCTE05	Housing
	RAE25-XL-NPP-B	Bearing designation