



Technical data

UCEHE210

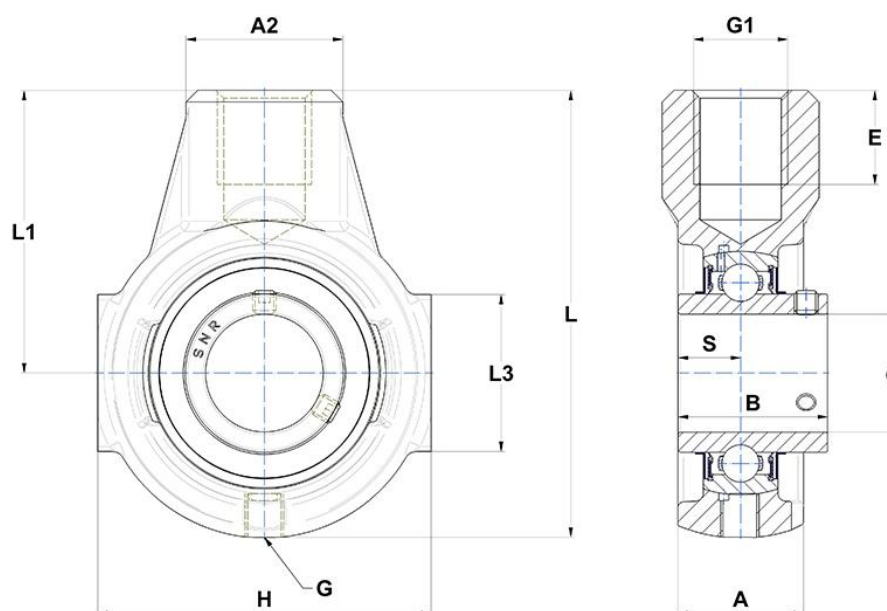
Bearing units

Grey cast housing, radial insert ball bearing with socket set screws, seal with slinger

KIT CONTENT

UC210G2, EHE210

VISUAL (S)



PRODUCT DIMENSIONS

Housing width (A)	40 mm
Width over loc. slot flange(T/ST)/width at mount. hole(EHE)(A2)	40 mm
Total height - frame + insert (A5)	32,6 mm
Width of IR (B)	51,6 mm
Shaft dia (d)	50 mm
Mounting hole thread depth (E)	24 mm

PRODUCT DIMENSIONS

Grease fitting (G)	R1/8"
Thread size (G1)	M24
Housing length, width or diameter (H)	110 mm
Housing length (L)	145 mm
Distance from attachment end face to bearing centerline (L1)	90 mm
Length of location slot (T/ST)/ guidance length (EHE) (L3)	46 mm
Dist. cent. of raceway to face IR on side opp. lock. device (S)	19 mm
Wrench size (SW)	5 mm
Brand	SNR

PRODUCT PERFORMANCE

Dynamic load rating (C)	35,1 kN
Static load rating (C0)	23,2 kN
Operating temperature min.	-20 °C
Operating temperature max.	100 °C

OTHER FEATURES

Mass	1,8 kg
Recommended tightening torque for set screw [Nm]	22.0 N-m