



## Technical data

### SUCP206

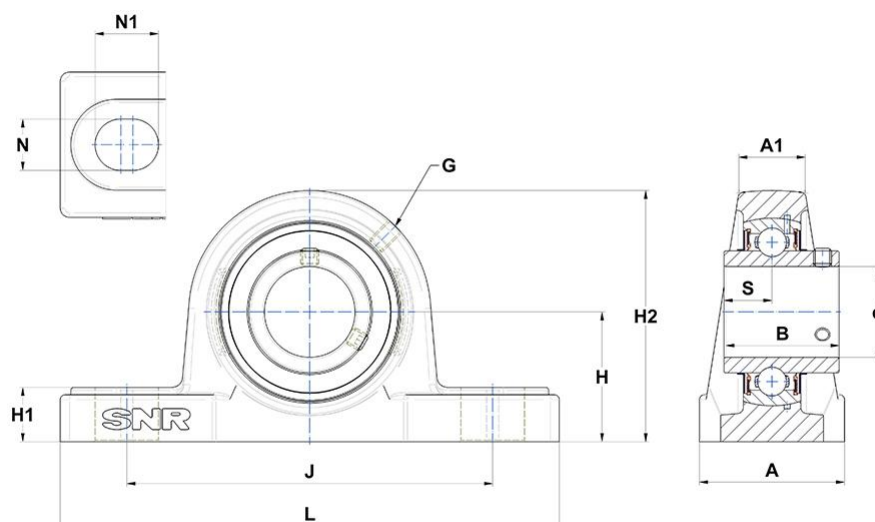
Bearing units

Stainless steel cast housing, stainless steel insert ball bearing with socket set screws, seal with slinger, food grease

## KIT CONTENT

SUC206, SP206

## VISUAL (S)



## OTHER FEATURES

<b>Mass</b>	1,61 kg
<b>Recommended tightening torque for set screw [Nm]</b>	3.9 N-m

## PRODUCT DIMENSIONS

<b>Housing width (A)</b>	48 mm
<b>Housing top width (A1)</b>	24 mm

## PRODUCT DIMENSIONS

<b>Width of IR (B)</b>	38,1 mm
<b>Shaft dia (d)</b>	30 mm
<b>Grease fitting (G)</b>	M6x1
<b>Distance mounting base to centerline spheric. seating diam. (H)</b>	42,9 mm
<b>Housing foot height (H1)</b>	18 mm
<b>Housing height (H2)</b>	83 mm
<b>Mounting hole distance (J)</b>	121 mm
<b>Housing length (L)</b>	165 mm
<b>Mounting hole dimension (N)</b>	17 mm
<b>Mounting hole length (N1)</b>	21 mm
<b>Dist. cent. of raceway to face IR on side opp. lock. device (S)</b>	15,9 mm
<b>Brand</b>	SNR

## PRODUCT PERFORMANCE

<b>Dynamic load rating (C)</b>	19,4 kN
<b>Static load rating (C0)</b>	11,2 kN
<b>Operating temperature min.</b>	-20 °C
<b>Operating temperature max.</b>	100 °C