



Technical data

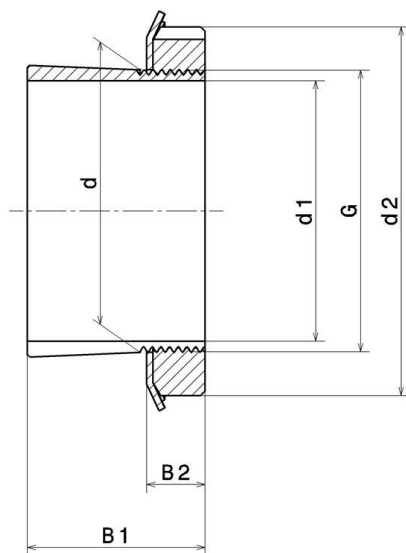
H.318

Adapter sleeve

KIT CONTENT

KM18, MB18

VISUAL (S)



PRODUCT DIMENSIONS

Sleeve bore diameter (d1)	80 mm
Internal diameter (d)	90 mm
Outer diameter of locknut (d2)	120 mm
Sleeve length (B1)	65 mm
Distance between the bearing face and nut rear face (B2)	18 mm
Thread designation (G)	M90X2
Associated bearing	21318, 22218, 1318, 2218

PRODUCT DIMENSIONS

Bore	Tapered 1:12
Mass	1,395 kg
Brand	SNR