



Technical data

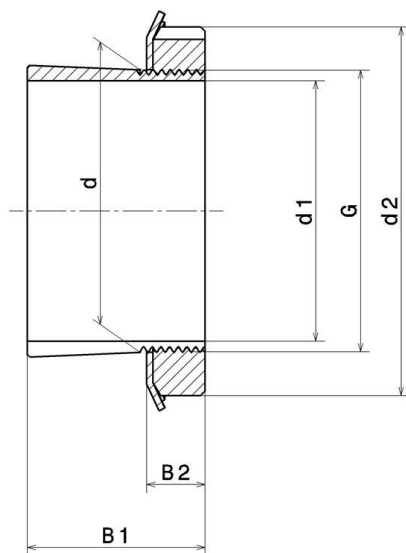
H315

Adapter sleeve

KIT CONTENT

MB.15, KM.15

VISUAL (S)



PRODUCT DIMENSIONS

Sleeve bore diameter (d1)	65 mm
Internal diameter (d)	75 mm
Outer diameter of locknut (d2)	98 mm
Sleeve length (B1)	55 mm
Distance between the bearing face and nut rear face (B2)	15 mm
Thread designation (G)	M75X2
Associated bearing	21315, 22215, 1315, 2215

PRODUCT DIMENSIONS

Bore	Tapered 1:12
Mass	0,861 kg
Brand	SNR