



Technical data

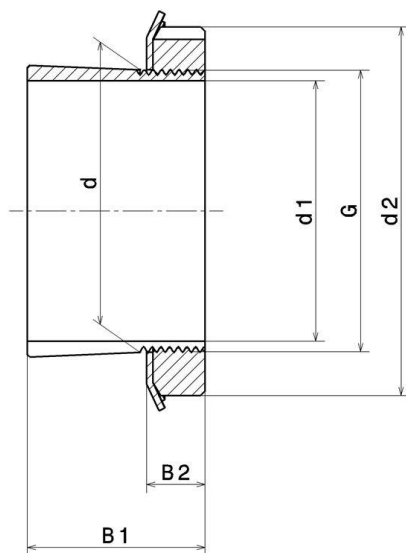
H313

Adapter sleeve

KIT CONTENT

KM.13, MB.13

VISUAL (S)



PRODUCT DIMENSIONS

Sleeve bore diameter (d1)	60 mm
Internal diameter (d)	65 mm
Outer diameter of locknut (d2)	85 mm
Sleeve length (B1)	50 mm
Distance between the bearing face and nut rear face (B2)	14 mm
Thread designation (G)	M65X2
Associated bearing	21313, 22213, 1313, 2213

PRODUCT DIMENSIONS

Bore	Tapered 1:12
Mass	0,462 kg
Brand	SNR