



Technical data

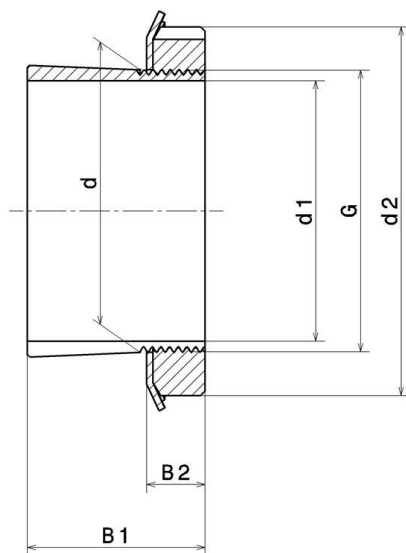
H.310

Adapter sleeve

KIT CONTENT

KM.10, MB.10

VISUAL (S)



PRODUCT DIMENSIONS

Sleeve bore diameter (d1)	45 mm
Internal diameter (d)	50 mm
Outer diameter of locknut (d2)	70 mm
Sleeve length (B1)	42 mm
Distance between the bearing face and nut rear face (B2)	12 mm
Thread designation (G)	M50X1.5
Associated bearing	21310, 22210, 1310, 2210

H.310

Adapter sleeve

PRODUCT DIMENSIONS

Bore	Tapered 1:12
Mass	0,3 kg
Brand	SNR