



Technical data

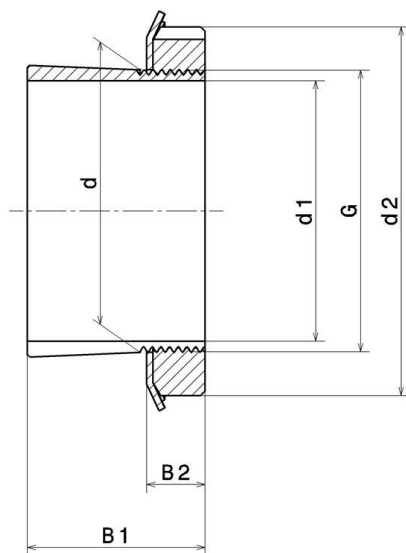
H309

Adapter sleeve

KIT CONTENT

MB9, KM.9

VISUAL (S)



PRODUCT DIMENSIONS

Sleeve bore diameter (d1)	40 mm
Internal diameter (d)	45 mm
Outer diameter of locknut (d2)	65 mm
Sleeve length (B1)	39 mm
Distance between the bearing face and nut rear face (B2)	11 mm
Thread designation (G)	M45X1.5
Associated bearing	21309, 22209, 1309, 2209

PRODUCT DIMENSIONS

Bore	Tapered 1:12
Mass	0,258 kg
Brand	SNR