



Technical data

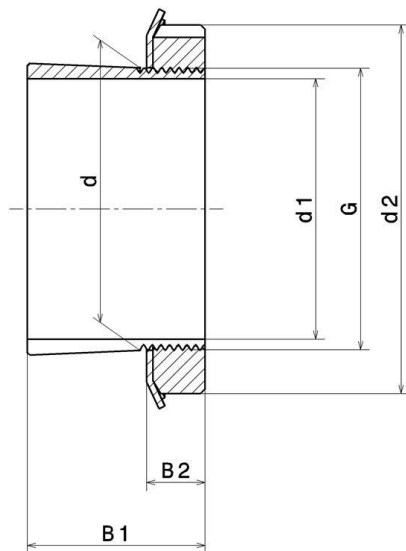
H2334

Adapter sleeve

KIT CONTENT

KM34, MB34

VISUAL (S)



PRODUCT DIMENSIONS

Sleeve bore diameter (d1)	150 mm
Internal diameter (d)	170 mm
Outer diameter of locknut (d2)	220 mm
Sleeve length (B1)	154 mm
Distance between the bearing face and nut rear face (B2)	29 mm
Thread designation (G)	M170X3
Associated bearing	22334, 23234

PRODUCT DIMENSIONS

Bore	Tapered 1:12
Mass	10,2 kg
Brand	SNR