



Technical data

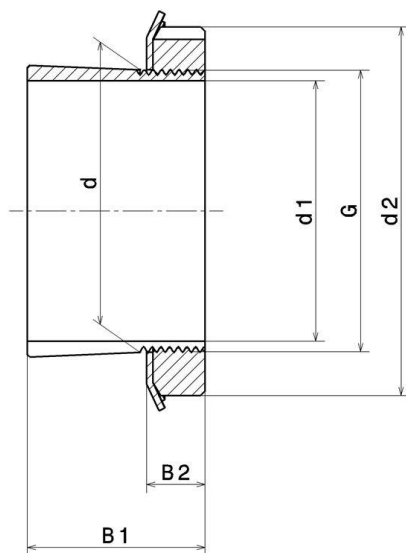
H2316

Adapter sleeve

KIT CONTENT

MB.16, KM.16

VISUAL (S)



PRODUCT DIMENSIONS

Sleeve bore diameter (d1)	70 mm
Internal diameter (d)	80 mm
Outer diameter of locknut (d2)	105 mm
Sleeve length (B1)	78 mm
Distance between the bearing face and nut rear face (B2)	17 mm
Thread designation (G)	M80X2
Associated bearing	22316, 2316

PRODUCT DIMENSIONS

Bore	Tapered 1:12
Mass	1,3 kg
Brand	SNR