



Technical data

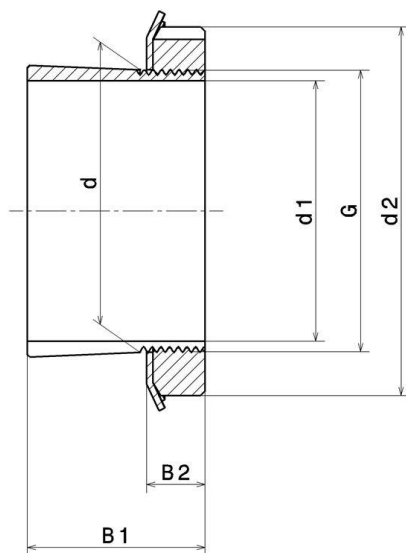
H2315

Adapter sleeve

KIT CONTENT

MB.15, KM.15

VISUAL (S)



PRODUCT DIMENSIONS

| | |
|---|-------------|
| Sleeve bore diameter (d1) | 65 mm |
| Internal diameter (d) | 75 mm |
| Outer diameter of locknut (d2) | 98 mm |
| Sleeve length (B1) | 73 mm |
| Distance between the bearing face and nut rear face (B2) | 15 mm |
| Thread designation (G) | M75X2 |
| Associated bearing | 22315, 2315 |

PRODUCT DIMENSIONS

| | |
|--------------|--------------|
| Bore | Tapered 1:12 |
| Mass | 1,05 kg |
| Brand | SNR |