



Technical data

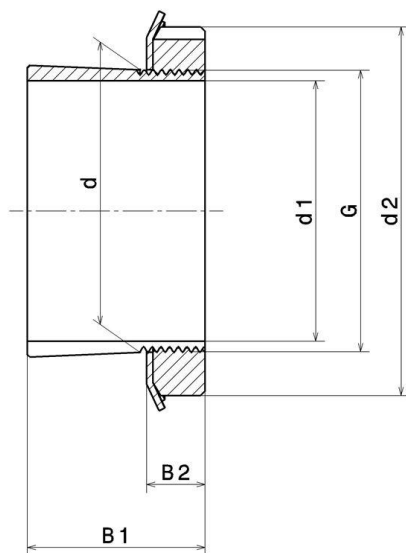
H222

Adapter sleeve

KIT CONTENT

MB.22, KM.22

VISUAL (S)



PRODUCT DIMENSIONS

Sleeve bore diameter (d1)	100 mm
Internal diameter (d)	110 mm
Outer diameter of locknut (d2)	145 mm
Sleeve length (B1)	63 mm
Distance between the bearing face and nut rear face (B2)	21 mm
Thread designation (G)	M110X2
Associated bearing	1222

PRODUCT DIMENSIONS

Bore	Tapered 1:12
Mass	1,9 kg
Brand	SNR