



Technical data

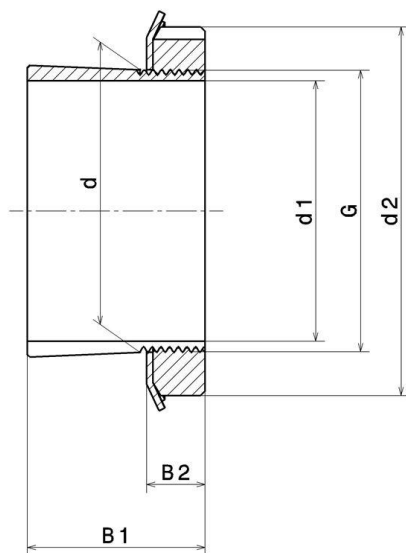
H213

Adapter sleeve

KIT CONTENT

MB.13, KM.13

VISUAL (S)



PRODUCT DIMENSIONS

Sleeve bore diameter (d1)	60 mm
Internal diameter (d)	65 mm
Outer diameter of locknut (d2)	85 mm
Sleeve length (B1)	40 mm
Distance between the bearing face and nut rear face (B2)	14 mm
Thread designation (G)	M65X2
Associated bearing	1213

PRODUCT DIMENSIONS

Bore	Tapered 1:12
Mass	0,4 kg
Brand	SNR