



## Technical data

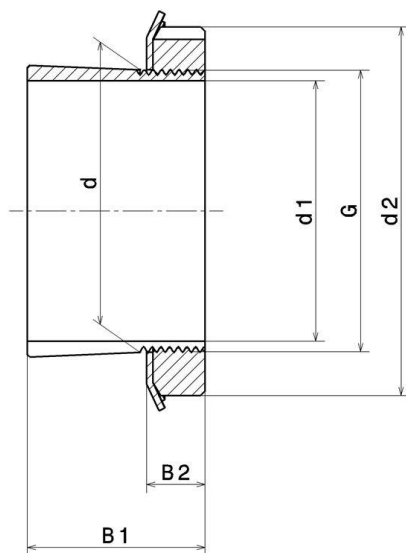
H210

Adapter sleeve

### KIT CONTENT

KM.10, MB.10

### VISUAL (S)



### PRODUCT DIMENSIONS

<b>Sleeve bore diameter (d1)</b>	45 mm
<b>Internal diameter (d)</b>	50 mm
<b>Outer diameter of locknut (d2)</b>	70 mm
<b>Sleeve length (B1)</b>	35 mm
<b>Distance between the bearing face and nut rear face (B2)</b>	12 mm
<b>Thread designation (G)</b>	M50X1.5
<b>Associated bearing</b>	1210

**PRODUCT DIMENSIONS**

<b>Bore</b>	Tapered 1:12
<b>Mass</b>	0,27 kg
<b>Brand</b>	SNR