

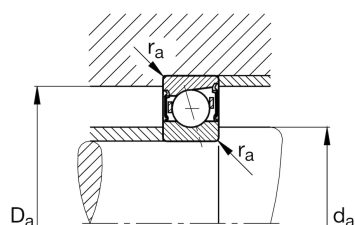
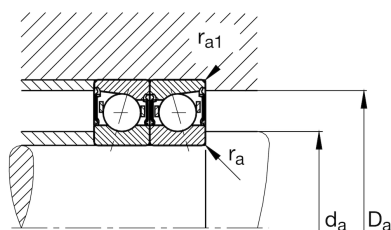
FAG

B71917-C-2RSD-T-P4S-UL

Spindle bearing

Schaeffler ID:
0387584310000Spindle bearings B719..-C-2RSD, adjusted, in pairs or sets, contact angle $\alpha = 15^\circ$, lip seals on both sides, non-contact, restricted tolerances

Technical information

**Main Dimensions & Performance Data**

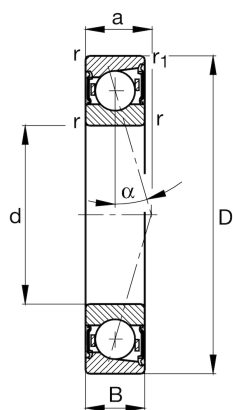
d	85 mm	Bore diameter
D	120 mm	Outside diameter
B	18 mm	Width
C_r	47.000 N	Basic dynamic load rating, radial
C_{0r}	33.500 N	Basic static load rating, radial
C_{ur}	3.500 N	Fatigue load limit, radial
$n_{G \text{ Grease}}$	11.000 1/min	Limiting speed for grease lubrication
	0,526 kg	Weight

Dimensions

r_{\min}	1,1 mm	Minimum chamfer dimension
$r_{1 \min}$	1,1 mm	Minimum chamfer dimension
α	15 °	Contact angle

Mounting dimensions

d_a	92 mm	Diameter shaft shoulder
d_a	h12	Diameter shaft shoulder clearance
D_a	114 mm	Shoulder diameter outer ring
D_a	H12	Shoulder diameter outer ring clearance
$r_{a \max}$	0,6 mm	Maximum recess radius
$r_{a1 \max}$	0,6 mm	Maximum recess radius
a	22,7 mm	Distance between the apexes of the pressure cones



Additional information

F_{VL}	237 N	Preload force light
F_{VM}	788 N	Preload force medium
F_{VH}	1.597 N	Preload force heavy
K_{aEL}	726 N	Lift-off force light
K_{aEM}	2.609 N	Lift-off force medium
K_{aEH}	5.644 N	Lift-off force heavy
c_{aL}	79,7 N/ μm	Axial rigidity light
c_{aM}	136 N/ μm	Axial rigidity medium
c_{aH}	195 N/ μm	Axial rigidity heavy