

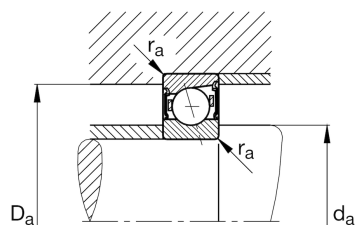
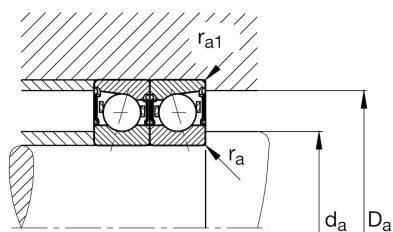
FAG

**B7013-E-2RSD-T-P4S-UL**

## Spindle bearing

Schaeffler ID:  
0385169260000Spindle bearings B70...-E-2RSD, adjusted, in pairs or sets, contact angle  $\alpha = 25^\circ$ , lip seals on both sides, non-contact, restricted tolerances

## Technical information

**Main Dimensions & Performance Data**

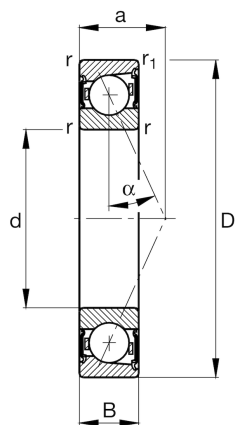
d	65 mm	Bore diameter
D	100 mm	Outside diameter
B	18 mm	Width
$C_r$	39.000 N	Basic dynamic load rating, radial
$C_{0r}$	24.100 N	Basic static load rating, radial
$C_{ur}$	2.550 N	Fatigue load limit, radial
$n_{G \text{ Grease}}$	13.000 1/min	Limiting speed for grease lubrication
	0,421 kg	Weight

**Dimensions**

$r_{\min}$	1,1 mm	Minimum chamfer dimension
$r_{1 \min}$	1,1 mm	Minimum chamfer dimension
$\alpha$	$25^\circ$	Contact angle

**Mounting dimensions**

$d_a$	72 mm	Diameter shaft shoulder
$d_a$	h12	Diameter shaft shoulder clearance
$D_a$	93 mm	Shoulder diameter outer ring
$D_a$	H12	Shoulder diameter outer ring clearance
$r_{a \max}$	1 mm	Maximum recess radius
$r_{a1 \max}$	0,6 mm	Maximum recess radius
a	28,2 mm	Distance between the apexes of the pressure cones



### Additional information

$F_{VL}$	308 N	Preload force light
$F_{VM}$	1.111 N	Preload force medium
$F_{VH}$	2.350 N	Preload force heavy
$K_{aEL}$	896 N	Lift-off force light
$K_{aEM}$	3.347 N	Lift-off force medium
$K_{aEH}$	7.323 N	Lift-off force heavy
$c_{aL}$	154 N/ $\mu\text{m}$	Axial rigidity light
$c_{aM}$	251 N/ $\mu\text{m}$	Axial rigidity medium
$c_{aH}$	342 N/ $\mu\text{m}$	Axial rigidity heavy