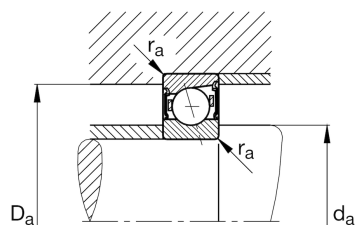
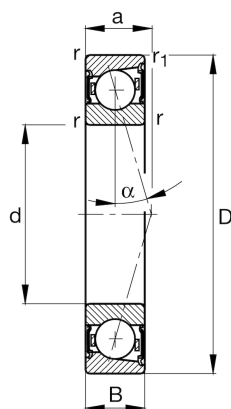
**FAG****B7004-C-2RSD-T-P4S-UL**

## Spindle bearing

Schaeffler ID:  
0191500160000Spindle bearings B70...-C-2RSD, adjusted, in pairs or sets, contact angle  $\alpha = 15^\circ$ , lip seals on both sides, non-contact, restricted tolerances

## Technical information

**Main Dimensions & Performance Data**

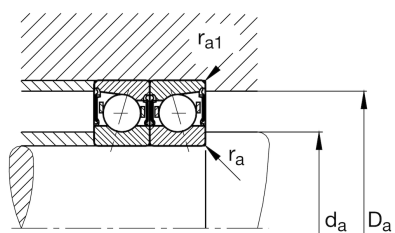
d	20 mm	Bore diameter
D	42 mm	Outside diameter
B	12 mm	Width
$C_r$	10.300 N	Basic dynamic load rating, radial
$C_{0r}$	4.250 N	Basic static load rating, radial
$C_{ur}$	450 N	Fatigue load limit, radial
$n_{G \text{ Grease}}$	38.000 1/min	Limiting speed for grease lubrication
	67 g	Weight

**Dimensions**

$r_{\min}$	0,6 mm	Minimum chamfer dimension
$r_{1 \min}$	0,6 mm	Minimum chamfer dimension
$\alpha$	15 °	Contact angle

**Mounting dimensions**

$d_a$	25 mm	Diameter shaft shoulder
$d_a$	h12	Diameter shaft shoulder clearance
$D_a$	37 mm	Shoulder diameter outer ring
$D_a$	H12	Shoulder diameter outer ring clearance
$r_{a \max}$	0,6 mm	Maximum recess radius
$r_{a1 \max}$	0,3 mm	Maximum recess radius
a	10,2 mm	Distance between the apexes of the pressure cones



### Additional information

$F_{VL}$	51 N	Preload force light
$F_{VM}$	175 N	Preload force medium
$F_{VH}$	356 N	Preload force heavy
$K_{aEL}$	157 N	Lift-off force light
$K_{aEM}$	586 N	Lift-off force medium
$K_{aEH}$	1.276 N	Lift-off force heavy
$c_{aL}$	22,6 N/ $\mu\text{m}$	Axial rigidity light
$c_{aM}$	39,4 N/ $\mu\text{m}$	Axial rigidity medium
$c_{aH}$	56,8 N/ $\mu\text{m}$	Axial rigidity heavy