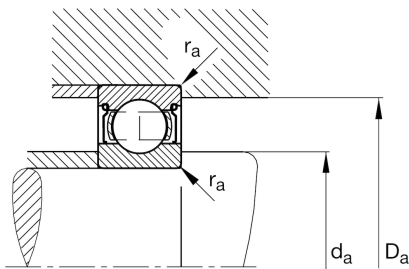
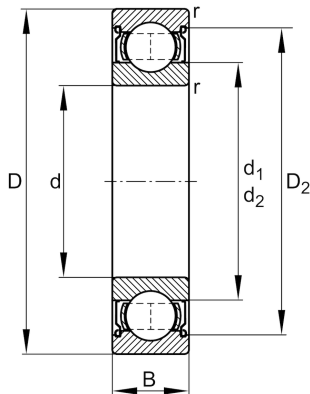


**FAG****6315-2Z**

Deep groove ball bearing

Schaeffler ID:
0167241190000Deep groove ball bearing 63...-2Z, single
row, shields, steel sheet metal cage

Technical information

**Main Dimensions & Performance Data**

d	75 mm	Bore diameter
D	160 mm	Outside diameter
B	37 mm	Width
C_r	123.000 N	Basic dynamic load rating, radial
C_{0r}	77.000 N	Basic static load rating, radial
C_{ur}	4.850 N	Fatigue load limit, radial
n_G	5.400 1/min	Limiting speed
n_{gr}	5.800 1/min	Reference speed
	3,2 kg	{Weight}

Mounting dimensions

$d_{a \min}$	87 mm	Minimum diameter shaft shoulder
$D_{a \max}$	148 mm	Maximum diameter of housing shoulder
$r_{a \max}$	2,1 mm	Maximum fillet radius

Dimensions

r_{\min}	2,1 mm	Minimum chamfer dimension
D_2	137,22 mm	Caliber diameter outer ring
d_1	101,4 mm	Shoulder diameter inner ring

Temperature range

T_{\min}	-20 °C	Operating temperature min.
T_{\max}	120 °C	Operating temperature max.

Calculation factors

f_0	13,2	Calculation factor
-------	------	--------------------