



FAG

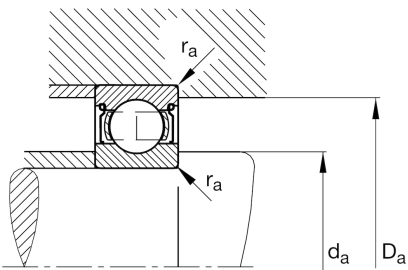
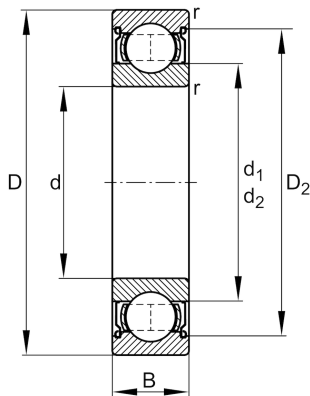
★ 6314-2Z

Deep groove ball bearing

Schaeffler ID:
0167240380000Deep groove ball bearing 63...-2Z, single
row, shields, steel sheet metal cage

★ Preferred product

Technical information



Temperature range

T_{\min}	-20 °C	Operating temperature min.
T_{\max}	120 °C	Operating temperature max.
	2,6 kg	Weight

Main Dimensions & Performance Data

d	70 mm	Bore diameter
D	150 mm	Outside diameter
B	35 mm	Width
C_r	115.000 N	Basic dynamic load rating, radial
C_{0r}	69.000 N	Basic static load rating, radial
C_{ur}	4.600 N	Fatigue load limit, radial
n_G	5.700 1/min	Limiting speed
n_{gr}	6.100 1/min	Reference speed

Dimensions

r_{\min}	2,1 mm	Minimum chamfer dimension
D_2	130,2 mm	Caliber diameter outer ring
d_1	94,8 mm	Shoulder diameter inner ring

Mounting dimensions

$d_{a\min}$	82 mm	Minimum diameter shaft shoulder
$D_{a\max}$	138 mm	Maximum diameter of housing shoulder
$r_{a\max}$	2,1 mm	Maximum fillet radius

Calculation factors

f_0	13,4	Calculation factor
-------	------	--------------------