

FAG

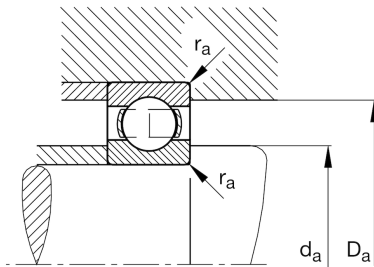
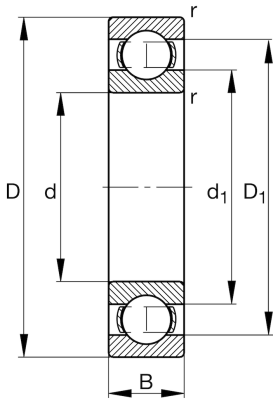
## ★ 6313

## Deep groove ball bearing

Schaeffler ID:  
0167239370000Deep groove ball bearing 63, single row,  
steel sheet metal cage

★ Preferred product

## Technical information



## Main Dimensions &amp; Performance Data

d	65 mm	Bore diameter
D	140 mm	Outside diameter
B	33 mm	Width
$C_r$	100.000 N	Basic dynamic load rating, radial
$C_{0r}$	60.000 N	Basic static load rating, radial
$C_{ur}$	4.050 N	Fatigue load limit, radial
$n_G$	7.300 1/min	Limiting speed
$n_{gr}$	6.400 1/min	Reference speed
	2,093 kg	Weight

## Dimensions

$r_{min}$	2,1 mm	Minimum chamfer dimension
$D_1$	117,6 mm	Shoulder diameter outer ring
$d_1$	88,6 mm	Shoulder diameter inner ring

## Mounting dimensions

$d_{a min}$	77 mm	Minimum diameter shaft shoulder
$D_{a max}$	128 mm	Maximum diameter of housing shoulder
$r_{a max}$	2,1 mm	Maximum fillet radius

## Temperature range

$f_0$	13,2	Calculation factor
$T_{min}$	-30 °C	Operating temperature min.
$T_{max}$	150 °C	Operating temperature max.