



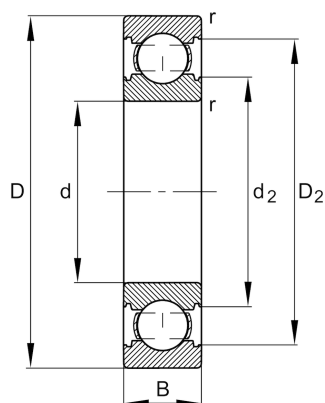
FAG

6312-C

Deep groove ball bearing

Schaeffler ID:
0821581850000Deep groove ball bearing 63...-C, single
row, Generation C, steel sheet metal cage

Technical information

**Dimensions**

| | | |
|------------|----------|-----------------------------|
| r_{\min} | 2,1 mm | Minimum chamfer dimension |
| D_2 | 112,1 mm | Caliber diameter outer ring |
| d_2 | 79,6 mm | Caliber diameter inner ring |
| | 1,681 kg | Weight |

Main Dimensions & Performance Data

| | | |
|----------|-------------|-----------------------------------|
| d | 60 mm | Bore diameter |
| D | 130 mm | Outside diameter |
| B | 31 mm | Width |
| C_r | 89.000 N | Basic dynamic load rating, radial |
| C_{0r} | 52.000 N | Basic static load rating, radial |
| C_{ur} | 3.600 N | Fatigue load limit, radial |
| n_G | 7.900 1/min | Limiting speed |
| n_{gr} | 7.400 1/min | Reference speed |

Mounting dimensions

| | | |
|-------------|--------|--------------------------------------|
| $d_{a\min}$ | 72 mm | Minimum diameter shaft shoulder |
| $D_{a\max}$ | 118 mm | Maximum diameter of housing shoulder |
| $r_{a\max}$ | 2,1 mm | Maximum fillet radius |

Calculation factors

| | | |
|-------|------|--------------------|
| f_0 | 13,2 | Calculation factor |
|-------|------|--------------------|

Temperature range

| | | |
|------------|--------|----------------------------|
| T_{\min} | -30 °C | Operating temperature min. |
| T_{\max} | 150 °C | Operating temperature max. |

