

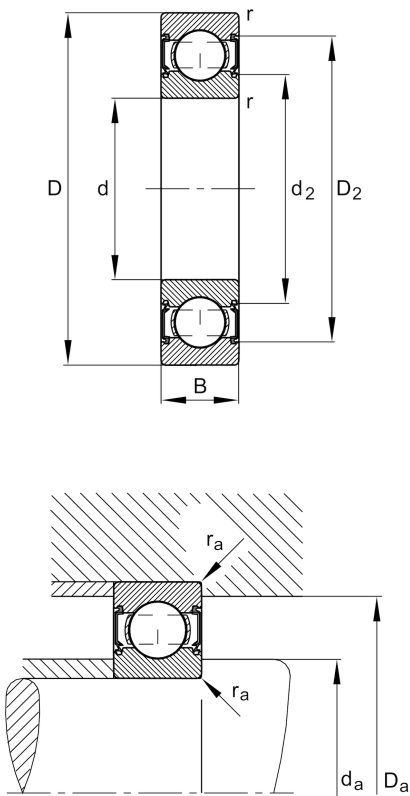
FAG

6312-C-2HRS
Deep groove ball bearing

Schaeffler ID:
0816667720000

Deep groove ball bearing 63...-C-2HRS,
single row, Generation C, seals, steel
sheet metal cage

Technical information



Dimensions

r_{min}	2,1 mm	Minimum chamfer dimension
D_2	112,1 mm	Caliber diameter outer ring
d_2	79,6 mm	Caliber diameter inner ring
	1,703 kg	Weight

Main Dimensions & Performance Data

d	60 mm	Bore diameter
D	130 mm	Outside diameter
B	31 mm	Width
C_r	89.000 N	Basic dynamic load rating, radial
C_{0r}	52.000 N	Basic static load rating, radial
C_{ur}	3.600 N	Fatigue load limit, radial
n_G	4.800 1/min	Limiting speed

Mounting dimensions

$d_{a min}$	72 mm	Minimum diameter shaft shoulder
$D_{a max}$	118 mm	Maximum diameter of housing shoulder
$r_{a max}$	2,1 mm	Maximum fillet radius

Calculation factors

f_0	13,2	Calculation factor
-------	------	--------------------

Temperature range

T_{min}	-20 °C	Operating temperature min.
T_{max}	100 °C	Operating temperature max.