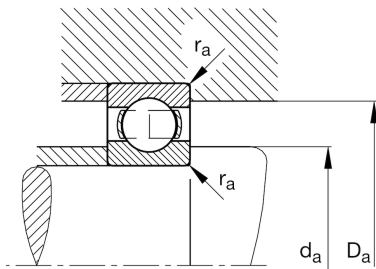
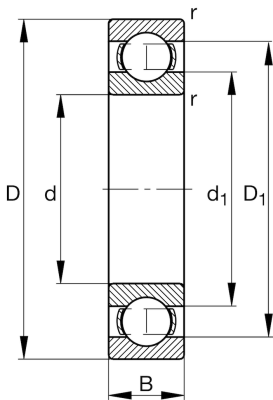


**FAG****6304**

Deep groove ball bearing

Schaeffler ID:  
0167228410000Deep groove ball bearing 63, single row,  
steel sheet metal cage

## Technical information

**Main Dimensions & Performance Data**

d	20 mm	Bore diameter
D	52 mm	Outside diameter
B	15 mm	Width
$C_r$	16.900 N	Basic dynamic load rating, radial
$C_{0r}$	7.900 N	Basic static load rating, radial
$C_{ur}$	540 N	Fatigue load limit, radial
$n_G$	19.800 1/min	Limiting speed
$n_{gr}$	14.400 1/min	Reference speed
	0,144 kg	{Weight}

**Mounting dimensions**

$d_{a \min}$	27 mm	Minimum diameter shaft shoulder
$D_{a \max}$	45 mm	Maximum diameter of housing shoulder
$r_{a \max}$	1 mm	Maximum fillet radius

**Dimensions**

$r_{\min}$	1,1 mm	Minimum chamfer dimension
$D_1$	41,95 mm	Shoulder diameter outer ring
$d_1$	30,3 mm	Shoulder diameter inner ring

**Temperature range**

$T_{\min}$	-30 °C	Operating temperature min.
$T_{\max}$	120 °C	Operating temperature max.

**Calculation factors**

$f_0$	12,4	Calculation factor
-------	------	--------------------