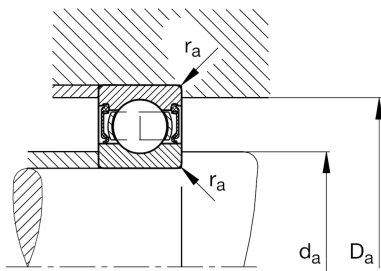
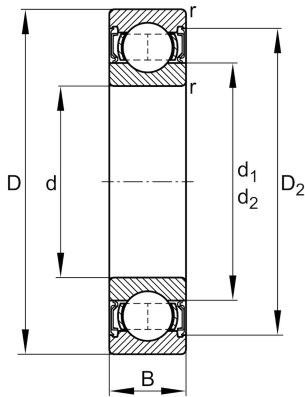


**FAG****62310-2RSR**

Deep groove ball bearing

Schaeffler ID:
0167221750000Deep groove ball bearing 623..-2RSR,
single row, seals, steel sheet metal cage

Technical information

**Main Dimensions & Performance Data**

d	50 mm	Bore diameter
D	110 mm	Outside diameter
B	40 mm	Width
C_r	66.000 N	Basic dynamic load rating, radial
C_{0r}	38.000 N	Basic static load rating, radial
C_{ur}	2.700 N	Fatigue load limit, radial
n_G	3.950 1/min	Limiting speed
	1,55 kg	Weight

Mounting dimensions

$d_{a \min}$	61 mm	Minimum diameter shaft shoulder
$D_{a \max}$	99 mm	Maximum diameter of housing shoulder
$r_{a \max}$	2 mm	Maximum fillet radius

Dimensions

r_{\min}	2 mm	Minimum chamfer dimension
D_2	95,14 mm	Caliber diameter outer ring
d_1	68 mm	Shoulder diameter inner ring

Temperature range

T_{\min}	-20 °C	Operating temperature min.
T_{\max}	100 °C	Operating temperature max.

Calculation factors

f_0	13,1	Calculation factor
-------	------	--------------------