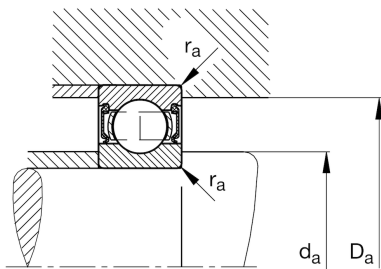
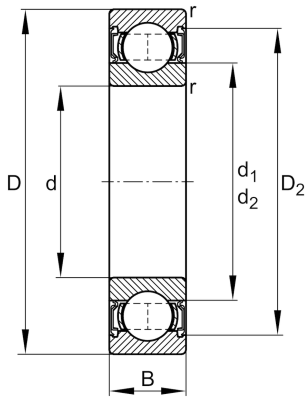


**FAG****62304-A-2RSR**

Deep groove ball bearing

Schaeffler ID:
0596798750000Deep groove ball bearing 623..-A-2RSR,
single row, steel sheet metal cage

Technical information

**Main Dimensions & Performance Data**

d	20 mm	Bore diameter
D	52 mm	Outside diameter
B	21 mm	Width
C_r	15.940 N	Basic dynamic load rating, radial
C_{0r}	7.880 N	Basic static load rating, radial
C_{ur}	560 N	Fatigue load limit, radial
n_G	8.900 1/min	Limiting speed
	0,2 kg	Weight

Mounting dimensions

$d_{a \min}$	27 mm	Minimum diameter shaft shoulder
$D_{a \max}$	45 mm	Maximum diameter of housing shoulder
$r_{a \max}$	1 mm	Maximum fillet radius

Dimensions

r_{\min}	1,1 mm	Minimum chamfer dimension
D_2	45,1 mm	Caliber diameter outer ring
d_1	30 mm	Shoulder diameter inner ring

Temperature range

T_{\min}	-20 °C	Operating temperature min.
T_{\max}	100 °C	Operating temperature max.

Calculation factors

f_0	12,4	Calculation factor
-------	------	--------------------