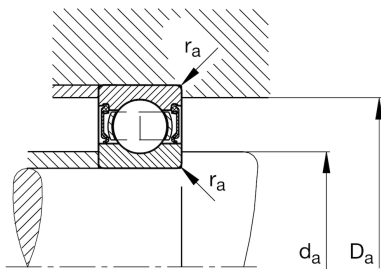
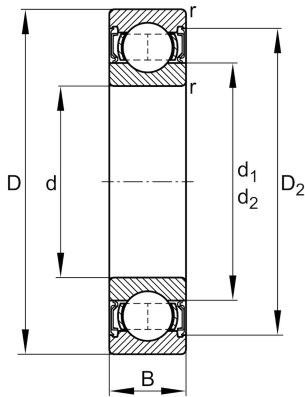


**FAG****62300-A-2RSR**

Deep groove ball bearing

Schaeffler ID:
0647760690000Deep groove ball bearing 623..-A-2RSR,
single row, steel sheet metal cage

Technical information

**Main Dimensions & Performance Data**

d	10 mm	Bore diameter
D	35 mm	Outside diameter
B	17 mm	Width
C_r	8.100 N	Basic dynamic load rating, radial
C_{0r}	3.440 N	Basic static load rating, radial
C_{ur}	270 N	Fatigue load limit, radial
n_G	15.000 1/min	Limiting speed
	60 g	Weight

Mounting dimensions

$d_{a \min}$	14,2 mm	Minimum diameter shaft shoulder
$D_{a \max}$	30,8 mm	Maximum diameter of housing shoulder
$r_{a \max}$	0,6 mm	Maximum fillet radius

Dimensions

r_{\min}	0,6 mm	Minimum chamfer dimension
D_2	30,2 mm	Caliber diameter outer ring
d_1	17,85 mm	Shoulder diameter inner ring

Temperature range

T_{\min}	-20 °C	Operating temperature min.
T_{\max}	100 °C	Operating temperature max.

Calculation factors

f_0	11,2	Calculation factor
-------	------	--------------------