

FAG

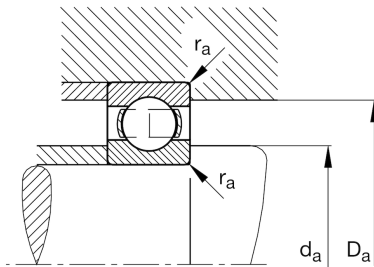
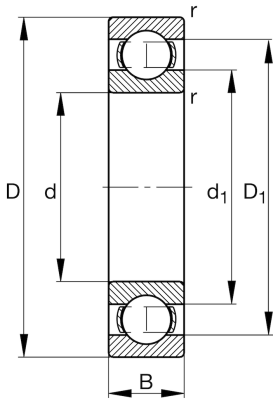
★ 6222

Deep groove ball bearing

Schaeffler ID:
0167218880000Deep groove ball bearing 62, single row,
steel sheet metal cage

★ Preferred product

Technical information



Main Dimensions & Performance Data

d	110 mm	Bore diameter
D	200 mm	Outside diameter
B	38 mm	Width
C_r	153.000 N	Basic dynamic load rating, radial
C_{0r}	117.000 N	Basic static load rating, radial
C_{ur}	6.500 N	Fatigue load limit, radial
n_G	4.450 1/min	Limiting speed
n_{gr}	4.500 1/min	Reference speed
	4,445 kg	Weight

Dimensions

r_{min}	2,1 mm	Minimum chamfer dimension
D_1	171,7 mm	Shoulder diameter outer ring
d_1	138,4 mm	Shoulder diameter inner ring

Mounting dimensions

$d_{a min}$	122 mm	Minimum diameter shaft shoulder
$D_{a max}$	188 mm	Maximum diameter of housing shoulder
$r_{a max}$	2,1 mm	Maximum fillet radius

Temperature range

f_0	14,3	Calculation factor
T_{min}	-30 °C	Operating temperature min.
T_{max}	150 °C	Operating temperature max.